

HELEN TOWNSHIP

Each township has six files containing six sections in each, and one file containing all 36 sections.

Helen01to06.pdf
Helen07to12.pdf
Helen13to18.pdf
Helen19to24.pdf
Helen25to30.pdf
Helen31to36.pdf
HelenAll36.pdf

The points are listed starting with the point above the SE corner and continuing in a counter-clockwise rotation around the section. This normally begins with the East point, Northeast, then North, but may also include Witness Corners, and/or Meander Corners.

Definitions

Witness Corner: A witness corner “stands in” when the true corner cannot be monumented or occupied because of difficult terrain or obstruction of the corner sight. The witness corner must be on the section line and is usually 5 or 10 chains away from the true corner.

Meander Corner: The intersection of a township, range, or section line and the banks of a navigable stream or meandering body of water.

EAST QUARTER corner, Section 31, Township 115 North, Range 27 West

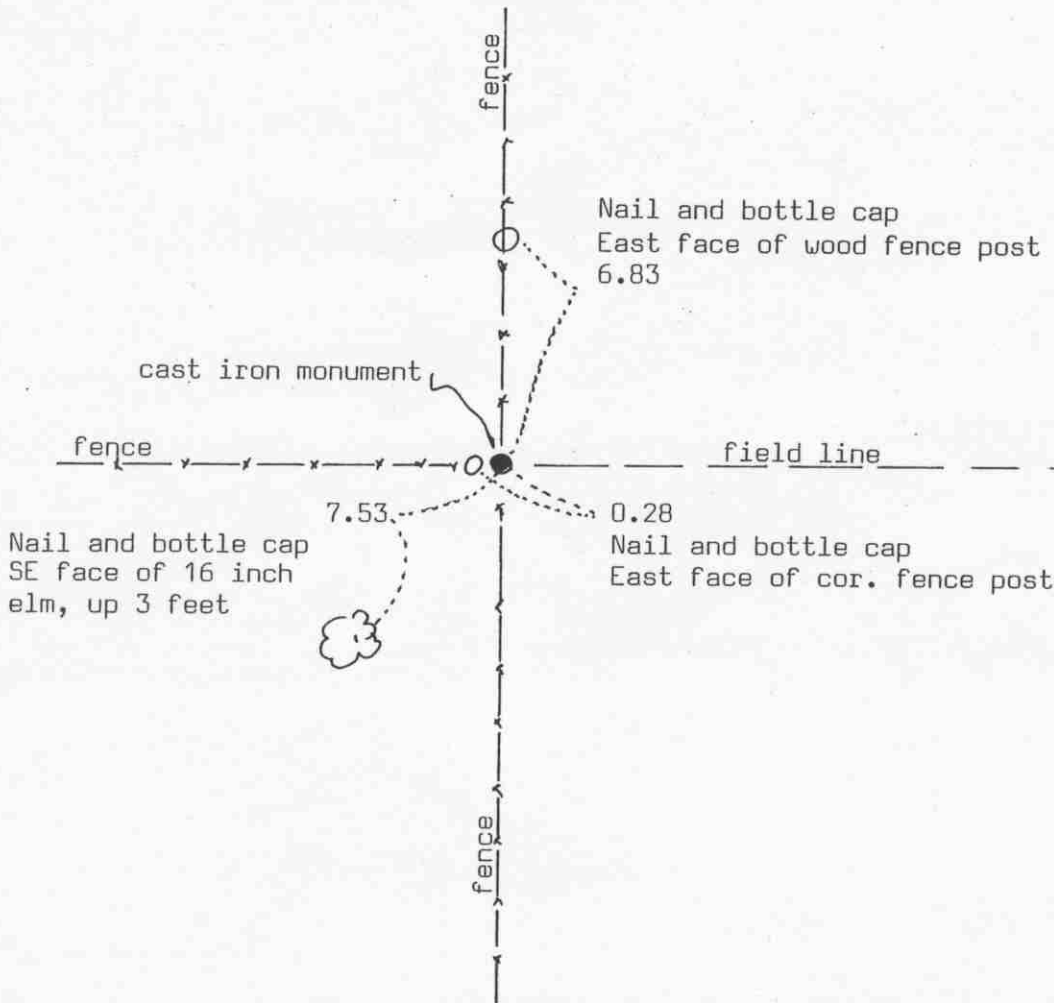
Certificate of Location of Government Corner

SKETCH OF REFERENCE TIES

(NO SCALE)

SECTION 31

SECTION 32



Statement of evidence relative to this corner location on sheet 2

I hereby certify that this document was prepared by me or under my direct supervision.

Willard Pellinen

Willard Pellinen
McLeod County Surveyor
License No. 9626

Date Dec. 21, 1993

OFFICE OF THE COUNTY RECORDER
MCLEOD COUNTY, MINNESOTA.

I hereby certify that this document was filed in this office at 9 o'clock A. M. on the 23rd day of December, 1993.

Carmen Estlin Mulder, County Recorder

By _____, Deputy

Document No. 256685

EAST QUARTER corner, Section 31, Township 115 North, Range 27 West

Certificate of Location of Government Corner

1856. E. N. Darling of the General Land Office set a post and marked 2 ironwoods for bearing trees.

February 2, 1974. McCombs Knutson Associates (Dickman Knutson, county surveyor) measured the east line of Section 31 and set a temporary east quarter corner at the fence intersection.

Arthur DAMmann, 65 years old and had lived in the Southwest Quarter of Section 32 for 41 years, stated the fence corner is the quarter corner.

Herman Dittmer, 82 years old and had lived in the Northeast Quarter of Section 32 all his life also said the fence corner is the quarter corner.

July 29, 1974. Knutson set a McLeod County cast iron monument at the corner and took available reference ties.

October 15, 1993. We found the monument in good condition and took new reference ties.

This corner is $13\frac{1}{2}$ feet south of a split between the section corners and 7 feet of a straight line between the section corners.

The monument set by Knutson is accepted as marking the correct location of the quarter corner. It fits long standing occupation lines, the fences and old adjoining land owners testified it was the correct corner.

NORTHEAST corner, Section 31, Township 115 North, Range 27 West

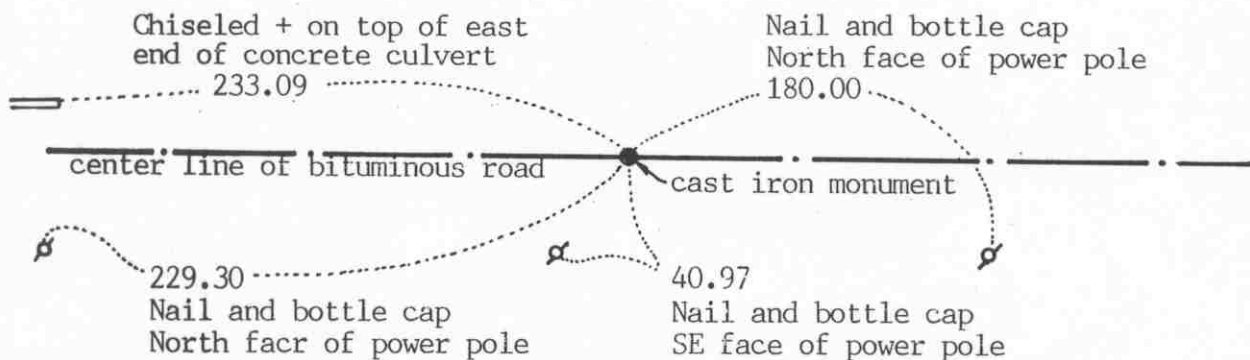
Certificate of Location of Government Corner



SKETCH OF REFERENCE TIES (NO SCALE)

SECTION 30

SECTION 29



SECTION 31

SECTION 32

Statement of evidence relative to this corner location on sheet 2

I hereby certify that this document was prepared by me or under my direct supervision.

Willard Pellinen

Willard Pellinen
McLeod County Surveyor
License No. 9626

Date Oct. 19, 1991

OFFICE OF THE COUNTY RECORDER
MCLEOD COUNTY, MINNESOTA.

I hereby certify that this document was filed in this office at 2 o'clock P. M. on the 23rd day of Oct, 19 91.

Carman Postlie, County Recorder

By _____, Deputy

Document No. 241662

NORTHEAST corner, Section 31, Township 115 North, Range 27 West

Certificate of Location of Government Corner

This corner was originally set by the government in 1856. E. N. Darling set a post and marked 2 elms, an ash and a linden for bearing trees.

January, 1974. McCombs Knutson Associates (Dickman Knutson county surveyor) measured the north line of Sections 31 and 32 and set a temporary section corner on the center line of the east west road in line with a field line to the south.

May 14, 1974. Knutson excavated for the corner, John Tupa from Hutchinson with a backhoe. They dug a hole along the center line of the road about 15 feet long. Down 3 feet below the surface of the road they found a stone, 8 inches in diameter 16 inches long, set on end. Below the stone they found a wood stake. This was on the center line of the road about 6 feet east of the field line to the south. They took reference ties.

November 12, 1975. Knutson set a McLeod County cast iron monument at the corner and took additional ties.

January 9, 1991. We found the monument and checked the reference ties.

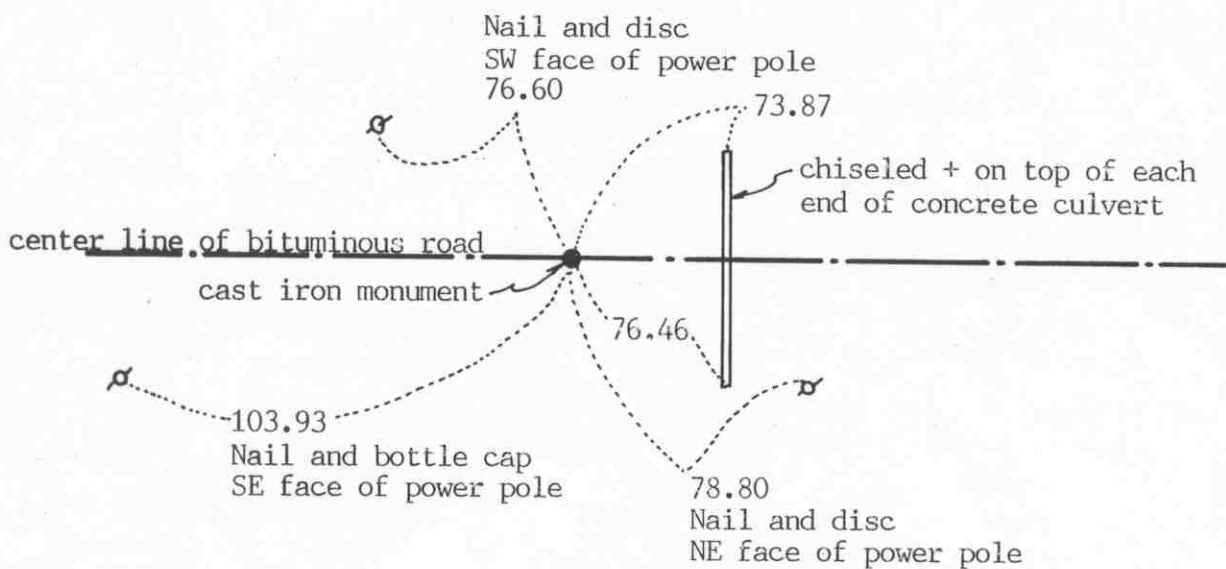
We accept the monument set by Knutson as marking the correct location of the section corner. We feel the stone and wood stake found by Knutson had perpetuated the section corner location.

NORTH QUARTER corner, Section 31, Township 115 North, Range 27 West

Certificate of Location of Government Corner

SKETCH OF REFERENCE TIES (NO SCALE)

SECTION 30



SECTION 31

Statement of evidence relative to this corner location on sheet 2

I hereby certify that this document was prepared by me or under my direct supervision.

Willard Pellinen

Willard Pellinen
McLeod County Surveyor
License No. 9626

Date October 14, 1991

OFFICE OF THE COUNTY RECORDER
MCLEOD COUNTY, MINNESOTA.

I hereby certify that this document was filed in this office at 1 o'clock P.M. on the 21st day of Oct, 1991.

Carmen O'Brien, County Recorder

By _____, Deputy

Document No. 241583

NORTH QUARTER corner, Section 31, Township 115 North, Range 27 West

Certificate of Location of Government Corner

This corner was originally set by E.N.Darling of the General Land Office. He set a post and marked 2 oaks for bearing trees.

May 14, 1974. McCombs Knutson Associates (Dickman Knutson, county surveyor) dug for the corner at the center line of the east-west road at the government proration of the distances to the northwest and northeast corners. Down 3 feet below the road surface they found a stone, sharp point up, and a rotted wood stake beside the stone. They took available reference ties.

November 12, 1975. Knutson set a McLeod County cast iron monument at the corner.

This corner is within a few tenths of a foot of being on a government proration of the distances to the northeast and northwest corners of the section. It falls about 18 feet south of a straight line.

January 9, 1991. We checked the reference ties to the corner.

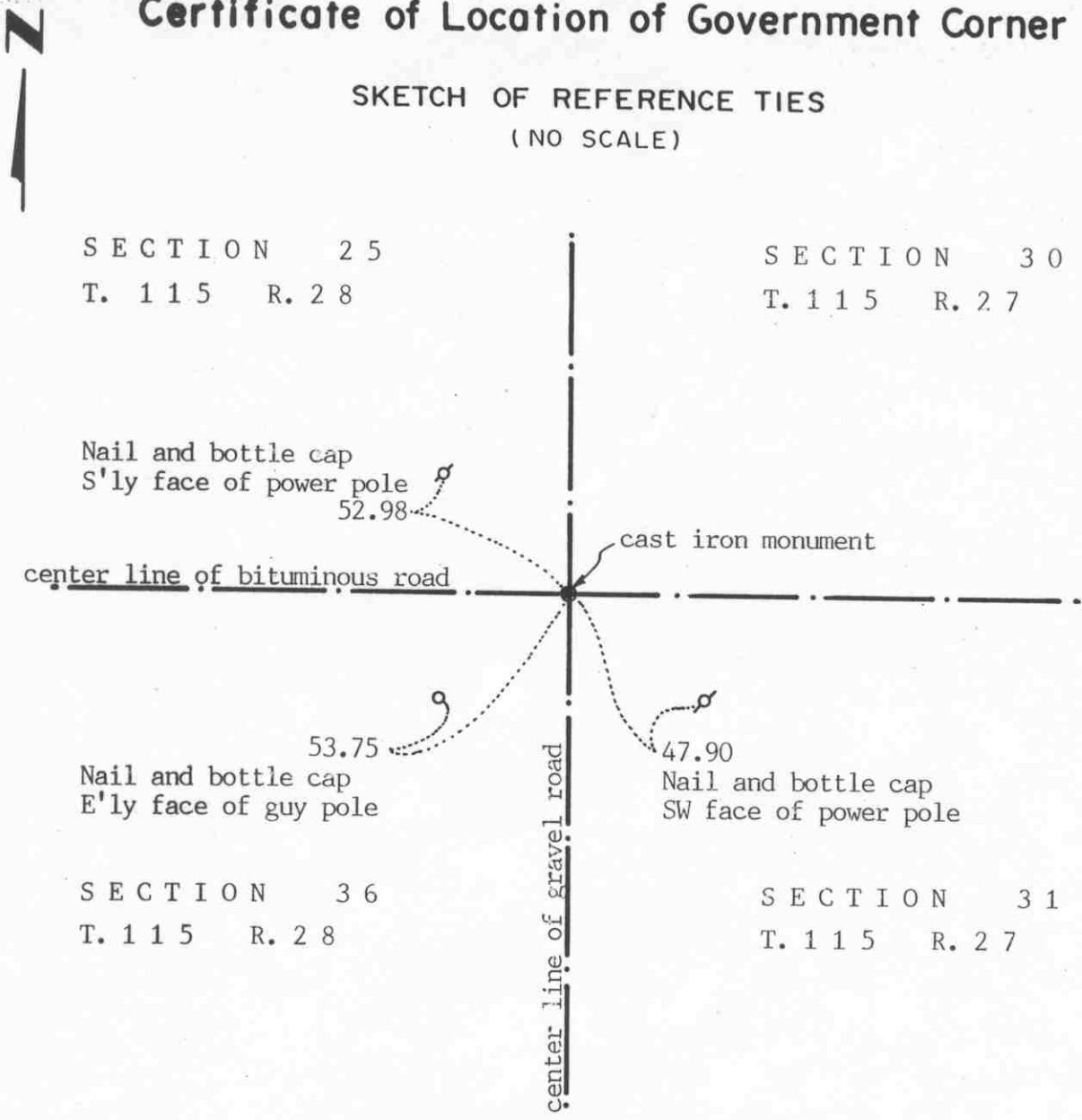
We believe the stone and wood stake found by Knutson had perpetuated the correct location of the quarter corner.

NORTHEAST corner, Section 36, Township 115 North, Range 28 West

Certificate of Location of Government Corner

SKETCH OF REFERENCE TIES

(NO SCALE)



SECTION 25
T. 115 R. 28

SECTION 30
T. 115 R. 27

SECTION 36
T. 115 R. 28

SECTION 31
T. 115 R. 27

Statement of evidence relative to this corner location on sheet 2

I hereby certify that this document was prepared by me or under my direct supervision.

Willard Pellinen
Willard Pellinen
McLeod County Surveyor
License No. 9626

Date October 18, 1991

OFFICE OF THE COUNTY RECORDER
MCLEOD COUNTY, MINNESOTA.

I hereby certify that this document was filed in this office at 1 o'clock P.M. on the 21st day of Oct, 1991.

Armen Botchie, County Recorder

By _____, Deputy

Document No. 241588

NORTHEAST corner, Section 36, Township 115 North, Range 28 West

Certificate of Location of Government Corner

This corner was originally set by the government in 1855. John Ryan set a post and marked 2 oaks and 2 lindens for bearing trees.

1968. McCombs Knutson Associates (Dickman Knutson, county surveyor) found an iron pin at the center line intersection of the north-south and east-west roads. They replaced the pin with a McLeod County cast iron monument and took reference ties.

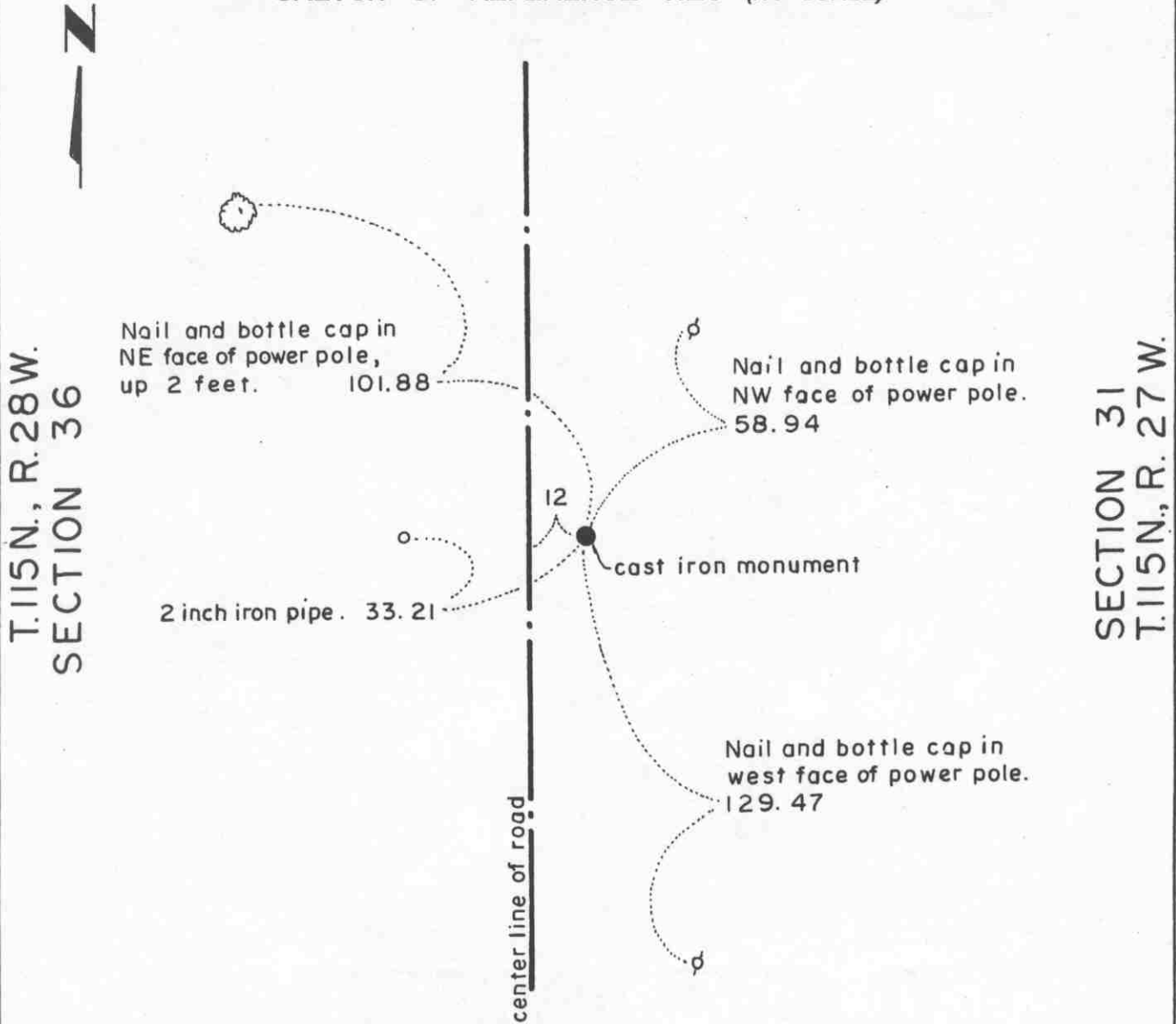
January 1, 1991. We found the monument in good condition and took new reference ties.

We believe the iron pin found by Knutson had perpetuated the correct location of the section corner.

Certificate of Location of Government Corner

EAST QUARTER corner, Section 36, Township 115 North, Range 28 West

SKETCH OF REFERENCE TIES (NO SCALE)



Statement of evidence relative to this corner location on sheet 2

I hereby certify that this document was prepared by me or under my direct supervision.

Willard Pellinen
 Willard Pellinen
 McLeod County Surveyor
 License No. 9626.

Date April 20, 1995

**OFFICE OF THE COUNTY RECORDER
 MCLEOD COUNTY, MINNESOTA**

I hereby certify that this document was filed in this office at 9 o'clock A.M. on the 24th day of Apr 19 95.

(Carmen) Estelle M. J. ... County Recorder

By _____, Deputy.

Document No. 265322

Certificate of Location of Government Corner
East Quarter Corner, Section 36, Township 115 North, Range 28 West

1855. John Ryan of the General Land Office established this corner. he set a post and marked a 12 inch aspen and a 10 inch aspen for bearing trees.

1968. Dickman Knutson, county surveyor, found an iron pipe approximately 10 feet east of the center line of the north-south road. He found a 1 1/2 inch diameter iron pipe 33 feet east of the iron pipe in the road. Mr. Proehl, 70 years old, said the 2 1/2 inch pipe was set 33 feet east of the quarter corner when the road was rebuilt. Knutson replaced the iron pipe in the road with a McLeod County cast iron monument and took reference ties.

January 31, 1995. We found the monument in good condition down 6 inches below the surface of the road and took new ties.

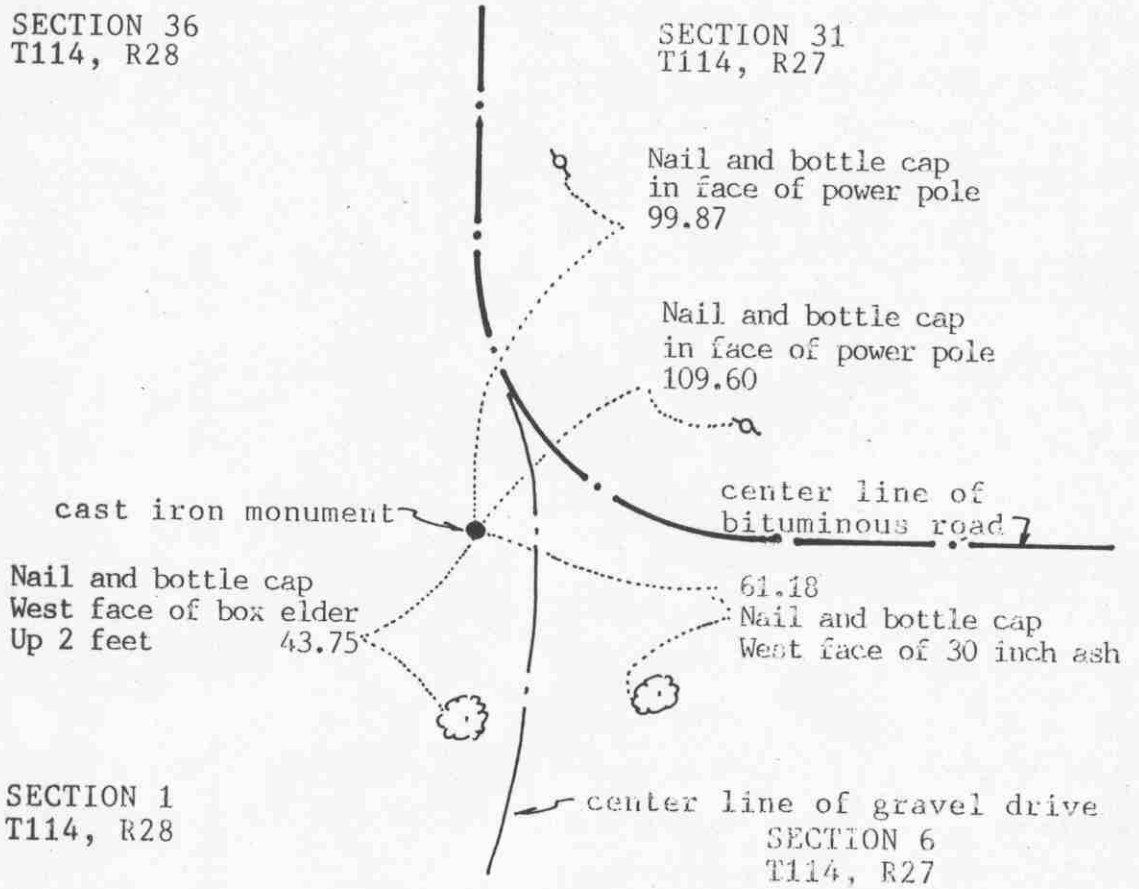
Certificate of Location of Government Corner



SKETCH OF REFERENCE TIES
(NO SCALE)

SECTION 36
T114, R28

SECTION 31
T114, R27



SECTION 1
T114, R28

SECTION 6
T114, R27

Statement of evidence relative to this corner location on sheet 2

I hereby certify that this document was prepared by me or under my direct supervision.

Willard Pellinen

Willard Pellinen
McLeod County Surveyor
License No. 9626

Date Feb. 19, 1992

OFFICE OF THE COUNTY RECORDER
MCLEOD COUNTY, MINNESOTA.

I hereby certify that this document was filed in this office at 9 o'clock A.M. on the 6th day of May, 1992.

Carmen Ostlie, County Recorder

By _____, Deputy

Document No. 245076

SOUTHEAST corner, Section 36, Township 115 North, Range 28 West

Certificate of Location of Government Corner

This corner was originally established by the Government Land Office in July, 1855. John Ryan set a post and marked 3 oaks and 1 elm for bearing trees.

December, 1968. Mr. Proehl (70 years old and has lived in the southeast quarter of Section 36 all his life) said he saw a stone which was moved when the road was graded. He said it was in line with a fence running south and 2 feet south of the fence running west.

McCombs Knutson Associates (Dickman Knutson, county surveyor) set a McLeod County cast iron monument at the location described by Mr. Proehl and took reference ties.

1973. Mr. Hillard Bullert, who lives in the West Half of the Northwest Quarter of Section 6, Township 114, Range 27, said the monument is in the correct location.

June 6, 1991. We found no reference ties remaining, dug and found the monument in good condition 4 inches below the surface. We took new available ties.

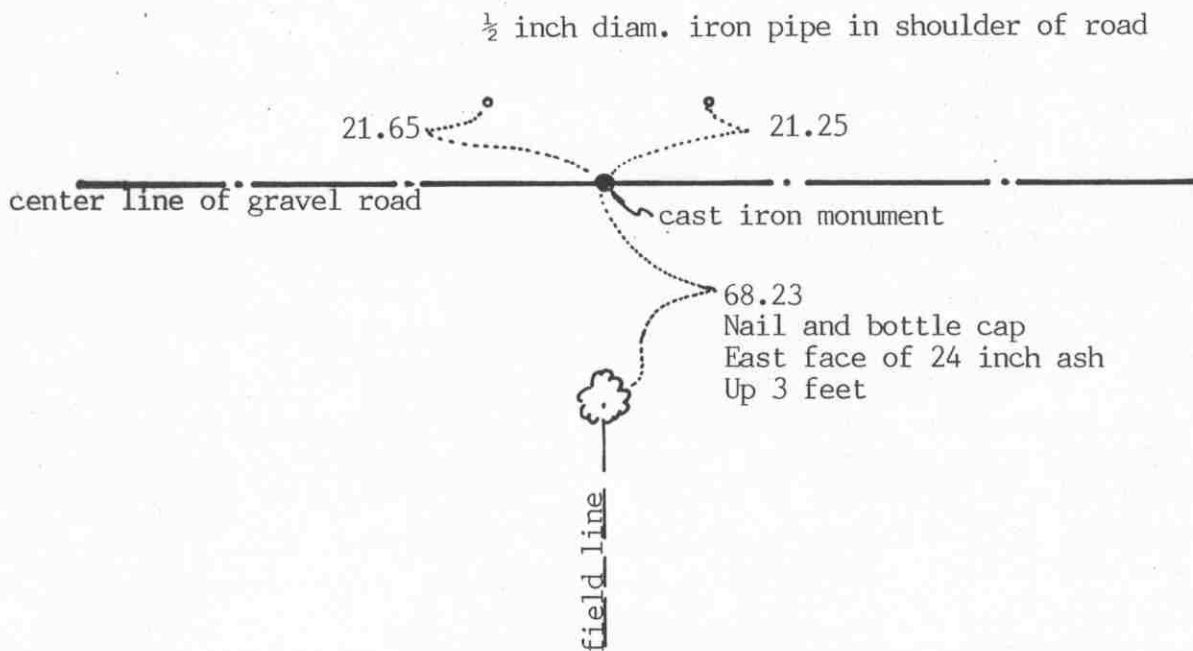
The monument is accepted as marking the correct location of the section corner. It fits the occupation lines as per Mr. Proehl and is on the center line P.I. of the gravel road.

SOUTH QUARTER corner, Section 31, Township 115 North, Range 27 West

Certificate of Location of Government Corner

SKETCH OF REFERENCE TIES
(NO SCALE)

SECTION 31, T115, R27



SECTION 6, T114, R27

Statement of evidence relative to this corner location on sheet 2

I hereby certify that this document was prepared by me or under my direct supervision.

Willard Pellinen

Willard Pellinen
McLeod County Surveyor
License No. 9626

Date Feb. 19, 1992

OFFICE OF THE COUNTY RECORDER
MCLEOD COUNTY, MINNESOTA.

I hereby certify that this document was filed in this office at 9 o'clock A.M. on the 6th day of May, 1992.

Carmen Ostlie, County Recorder

By _____, Deputy

Document No. 245073

Certificate of Location of Government Corner

This corner was originally established by the General Land Office in 1855. John Ryan set a post and marked 2 oaks for bearing trees.

1909. S.F.Mullen, Sibley County Surveyor recorded this corner as a stone. L. W. Grace also shows a stone at this corner in 1921.

1973. Delbert Rieke, Sibley County Surveyor, dug for the corner and found a stone and an iron shaft set in an old wood fence post under the old road bed.

Rieke set a Sibley County cast iron monument over the iron and alongside the stone and took reference ties.

June 6, 1991. None of the old ties remained. We found the monument in good condition down 4 inches below the road surface and took new ties.

The cast iron monument is accepted as the corner location. It perpetuates the position of an older monument and fits the occupation line, the center line of the road.

SOUTHEAST corner, Section 31, Township 115 North, Range 27 West

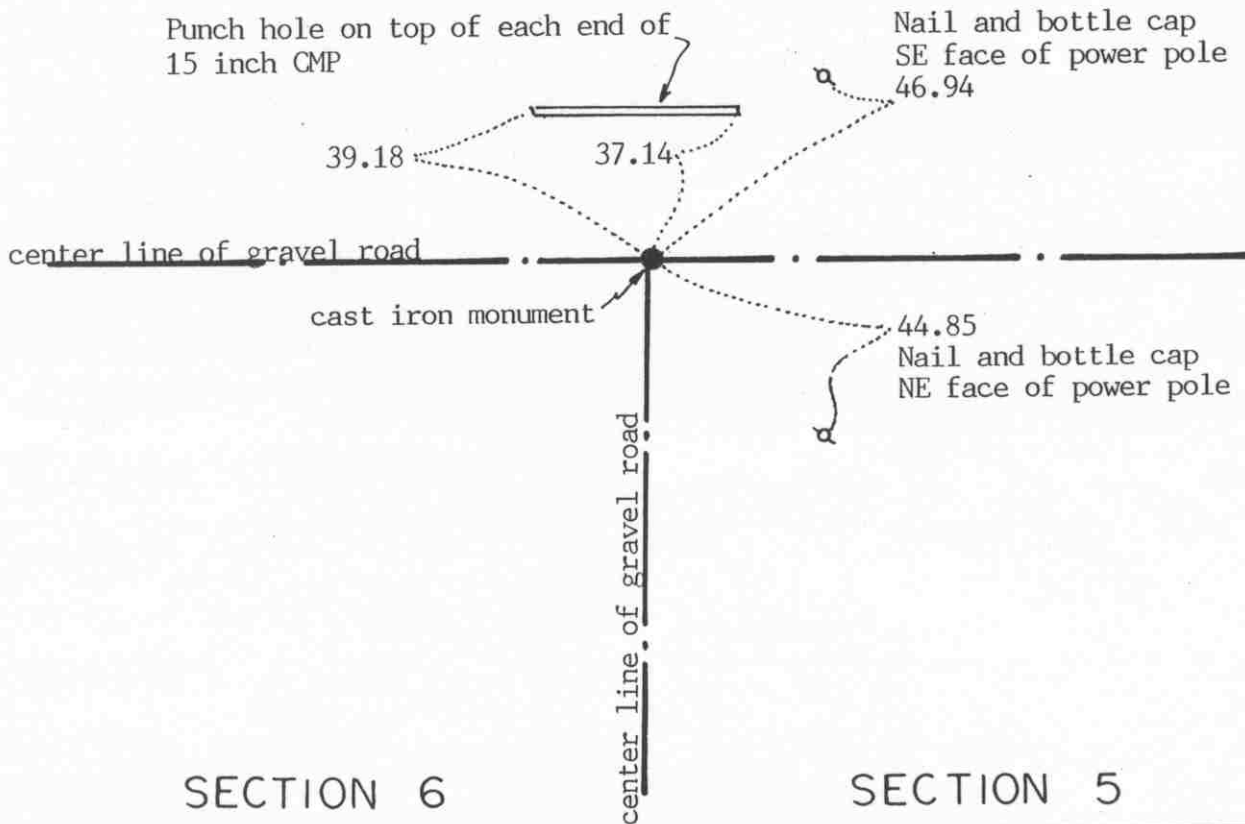
Certificate of Location of Government Corner

SKETCH OF REFERENCE TIES
(NO SCALE)



SECTION 31

SECTION 32



Statement of evidence relative to this corner location on sheet 2

I hereby certify that this document was prepared by me or under my direct supervision.

Willard Pellinen

Willard Pellinen
McLeod County Surveyor
License No. 9626

Date October 19, 1993

OFFICE OF THE COUNTY RECORDER
MCLEOD COUNTY, MINNESOTA.

I hereby certify that this document was filed in this office at 9 o'clock A.M. on the 23rd day of December, 1993.

Corman (St) Mulder, County Recorder

By _____, Deputy

Document No. 256686

SOUTHEAST _____ corner, Section 31, Township 115 North, Range 27 West

Certificate of Location of Government Corner

July, 1855. John Ryan of the General Land Office set a post and marked 2 oaks for bearing trees.

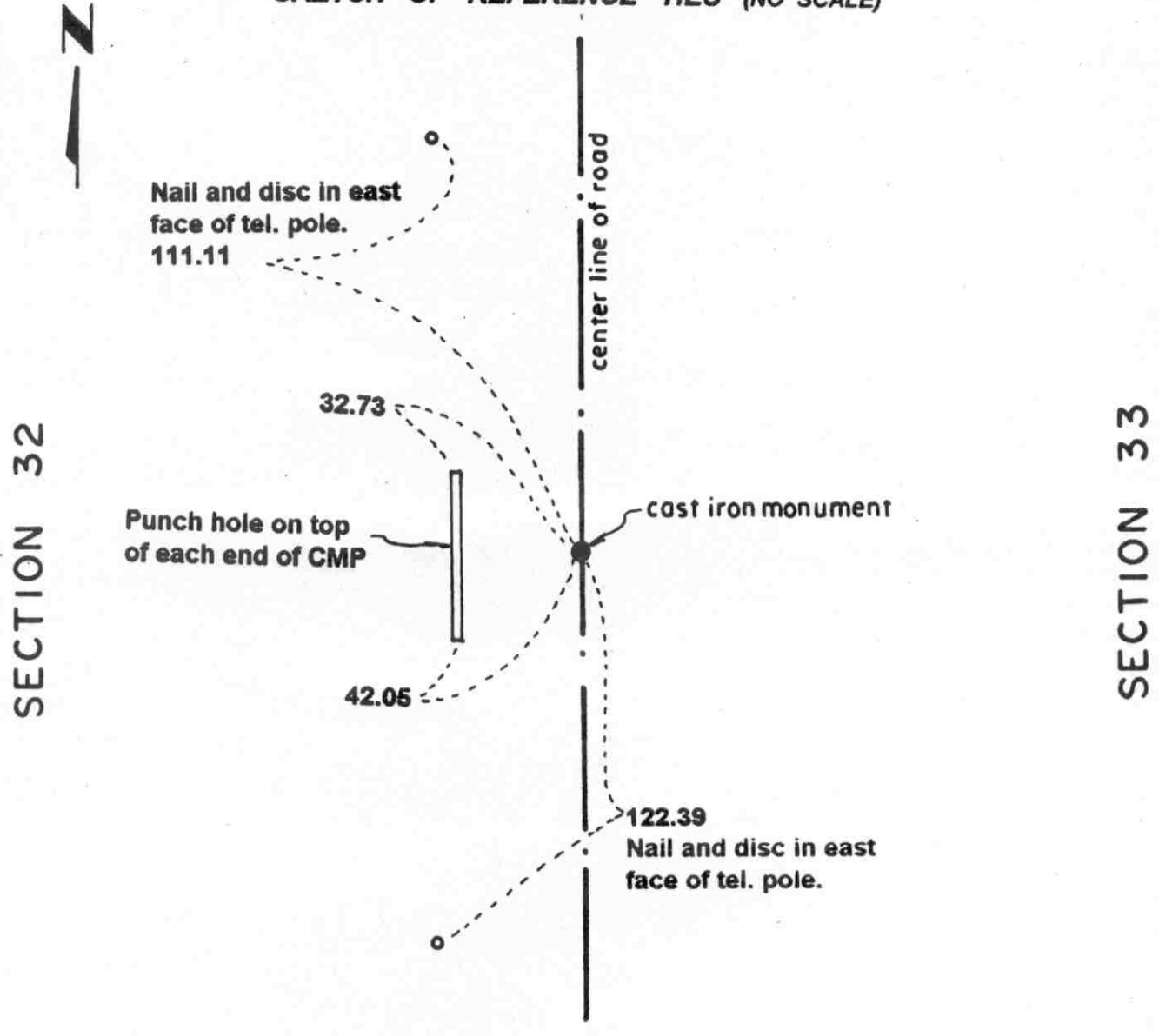
1973. Delbert Rieke, Sibley County Surveyor, dug for the corner and $1\frac{1}{2}$ feet below the old road bed found a stone and an iron shaft, in line with a field line to the north and on the center line intersection of roads east, west and south. Art Damman, 60 years old, (in the SW $\frac{1}{4}$ of Sec. 32) said the stone is the section corner. Rieke set a broken off cast iron monument over the stone.

October 15, 1993. We found the monument down 6 inches below the road surface and took available reference ties.

Certificate of Location of Government Corner

EAST QUARTER corner, Section 32, Township 115 North, Range 27 West

SKETCH OF REFERENCE TIES (NO SCALE)



Statement of evidence relative to this corner location on sheet 2

I hereby certify that this document was prepared by me or under my direct supervision.

Willard Pellinen
 Willard Pellinen
 McLeod County Surveyor
 License No. 9626.

Date July 5, 1995

**OFFICE OF THE COUNTY RECORDER
 MCLEOD COUNTY, MINNESOTA**

I hereby certify that this document was filed in this office at 9 o'clock A.M. on the 18th day of July, 19 95.

Carmen Estlie Muelder County Recorder

By _____, Deputy.

Document No. 267010

Certificate of Location of Government Corner
East Quarter Corner, Section 32, Township 115 North, Range 27 West

1856. E. N. Darling of the General Land Office originally established this corner. He set a post and marked an oak and a linden for bearing trees.

1974. Adjoining land owners say the quarter corner is the center line of the north-south road in line with a fence to the east and north of a ditch running east. Dickman Knutson, county surveyor, excavated for the corner but found no evidence of the government corner.

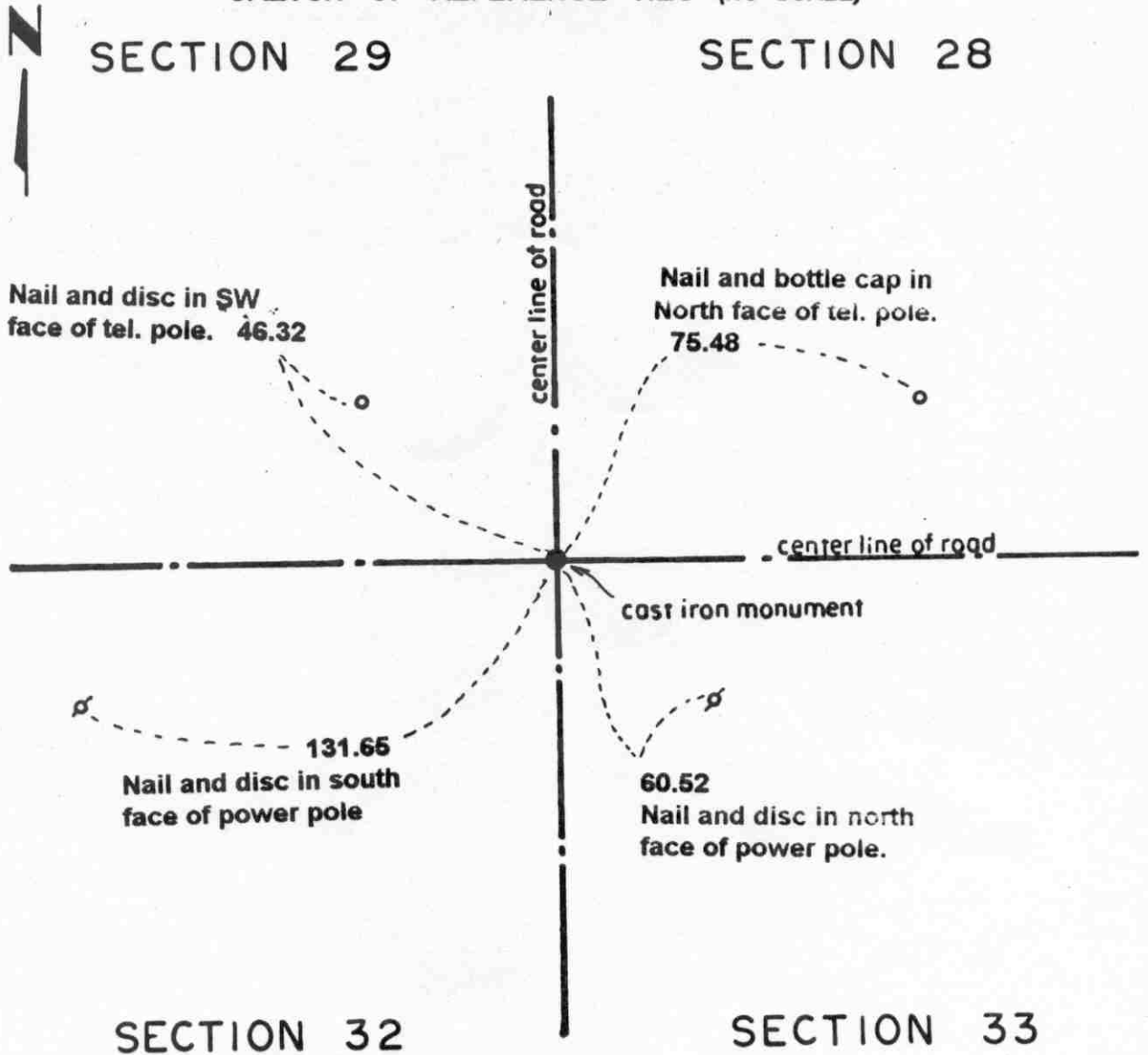
July 29, 1974. Knutson set a cast iron monument at the intersection with the westerly prolongation of the fence in the center of the road and took reference ties. This location agrees with old county highway department distances to the northeast and southeast corners of Section 32.

October, 1994. We found the monument in good condition and checked the reference ties.

Certificate of Location of Government Corner

NORTHEAST corner, Section 32, Township 115 North, Range 27 West

SKETCH OF REFERENCE TIES (NO SCALE)



Statement of evidence relative to this corner location on sheet 2

I hereby certify that this document was prepared by me or under my direct supervision.

Willard Pellinen
Willard Pellinen
McLeod County Surveyor
License No. 9626.

Date July 5, 1995

OFFICE OF THE COUNTY RECORDER
MCLEOD COUNTY, MINNESOTA

I hereby certify that this document was filed in this office at 9 o'clock A. M. on the 18th day of July, 19 95.

Carmen Ostlie & Juedes County Recorder

By _____, Deputy.

Document No. 267009

Certificate of Location of Government Corner
Northeast Corner, Section 32, Township 115 North, Range 27 West

1856. E. N. Darling of the General Land Office originally established this corner. He set a post and marked 4 trees as bearing trees.

May 13, 1974. Dickman Knutson, county surveyor, excavated for the corner (John Tupa from Hutchinson with a backhoe) at the intersection of the center lines of roads north, south, east and west, which location has been accepted by adjoining land owners as the section corner. They found no evidence of the government corner.

May 28, 1974. Knutson set a spike at the intersection and took reference ties.

October 4, 1976. Knutson set a McLeod County cast iron monument.

October, 1994. We found the monument in good condition and checked the reference ties.

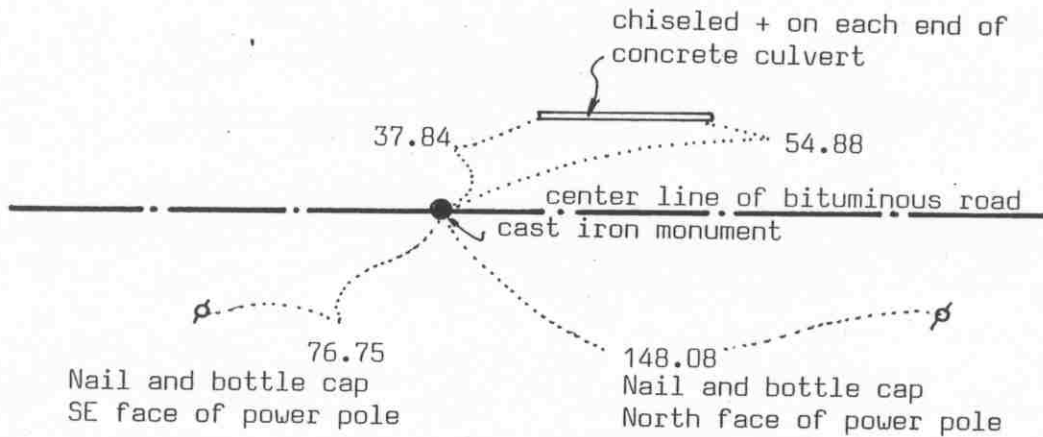
NORTH QUARTER corner, Section 32, Township 115 North, Range 27 West

Certificate of Location of Government Corner

SKETCH OF REFERENCE TIES

(NO SCALE)

SECTION 29



SECTION 32

Statement of evidence relative to this corner location on sheet 2

I hereby certify that this document was prepared by me or under my direct supervision.

Willard Pellinen

Willard Pellinen
McLeod County Surveyor
License No. 9626

Date Dec. 21, 1993

OFFICE OF THE COUNTY RECORDER
MCLEOD COUNTY, MINNESOTA.

I hereby certify that this document was filed in this office at 9 o'clock A.M. on the 23rd day of December, 1993.

Carmen Ostlie Mulder, County Recorder

By _____, Deputy

Document No. 256687

Certificate of Location of Government Corner

1856. E. N. Darling of the General Land Office set a post and marked an ash and an oak for bearing trees.

May, 1974. Dickman Knutson excavated for the corner, John Tupa from Hutchinson with a backhoe. Down in the original ground, they found a rotted wood stake, 1 inch by 2 inches by $1\frac{1}{2}$ feet long. They took reference ties.

November 12, 1975. Knutson set a McLeod County cast iron monument.

$\frac{1}{4}$ mile west, a fence running north is within a foot of being halfway between the north quarter corner and the northwest corner of the section. A ditch running south is $\frac{1}{4}$ of the distance between the quarter corner and the northeast corner of the section. This ditch was dug on the west line of the $E\frac{1}{2}$ of the $W\frac{1}{4}$ of the Northeast Quarter of Section 32.

October 15, 1993. We found the monument in good condition and checked the reference ties. This corner is approximately 6 feet west of a split between the section corners and about 5 feet north of a straight line between the section corners.

The monument set by Knutson is accepted as marking the correct location of the quarter corner. It fits a long standing occupation line, the center line of the road, and it perpetuates the location of an older monument, the wood stake.

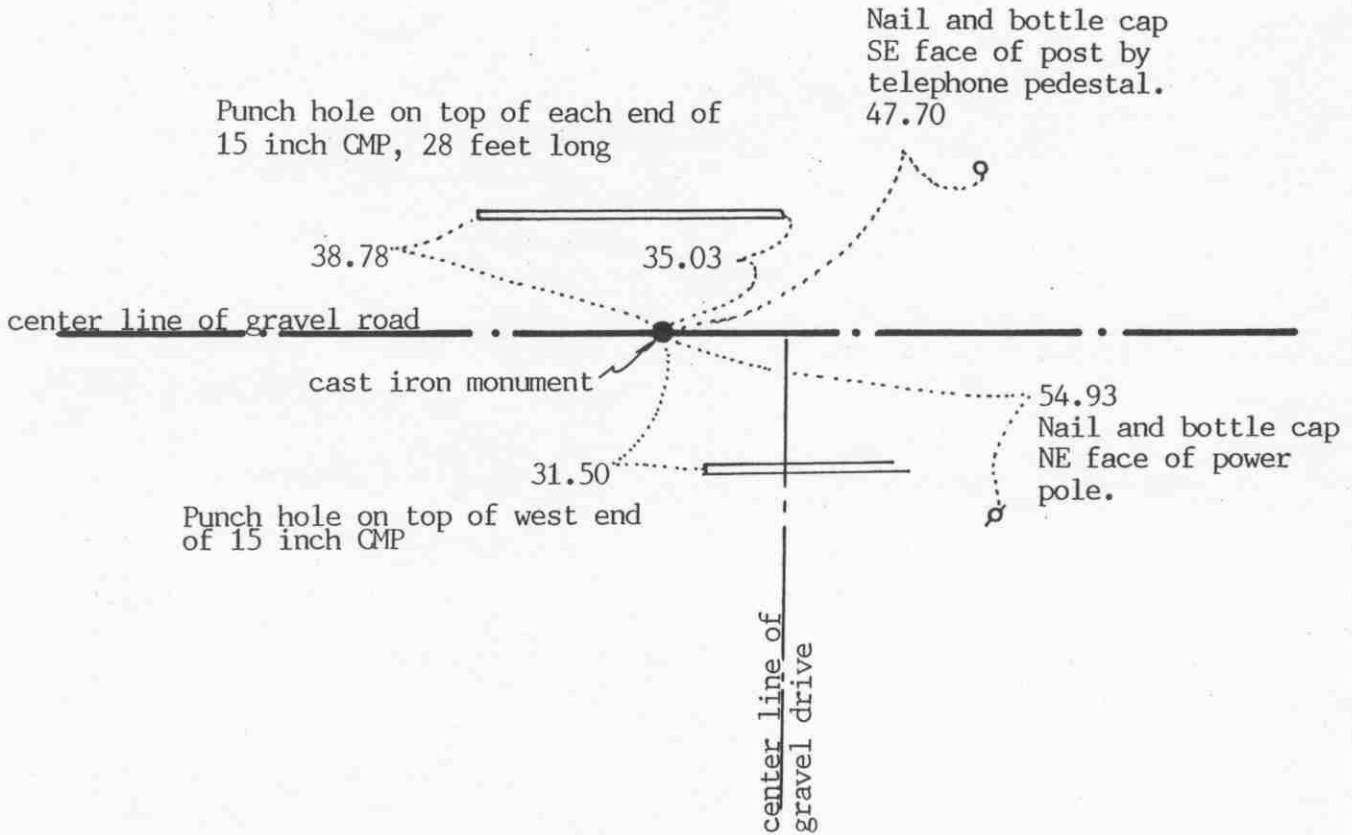
SOUTH QUARTER corner, Section 32, Township 115 North, Range 27 West

Certificate of Location of Government Corner

SKETCH OF REFERENCE TIES

(NO SCALE)

SECTION 32 T.115 R.27



SECTION 5 T. 114 R. 27

Statement of evidence relative to this corner location on sheet 2

I hereby certify that this document was prepared by me or under my direct supervision.

Willard Pellinen
 Willard Pellinen
 McLeod County Surveyor
 License No. 9626

Date October 19, 1993

OFFICE OF THE COUNTY RECORDER
 MCLEOD COUNTY, MINNESOTA.

I hereby certify that this document was filed in this office at 9 o'clock A.M. on the 23rd day of December, 1993.

Carmen Estlie Mulder, County Recorder

By _____, Deputy

Document No. 256688

SOUTH QUARTER corner, Section 32, Township 115 North, Range 27 West

Certificate of Location of Government Corner

July, 1855. John Ryan of the General Land Office originally established this corner. He set a post and marked 2 oaks for bearing trees.

1974. Delbert Rieke, Sibley County Surveyor, dug a hole 5 feet deep, 8 feet wide and 10 feet long at the center line of the road but found no evidence of a corner. Rieke set a cast iron monument in the center line of the east-west road in line with a fence to the north.

October 15, 1993. We found the monument in good condition down 10 inches below the surface of the gravel road and took reference ties. This monument is 2.7 feet west of a split and 0.7 feet north of a straight line between the section corners.

Certificate of Location of Government Corner

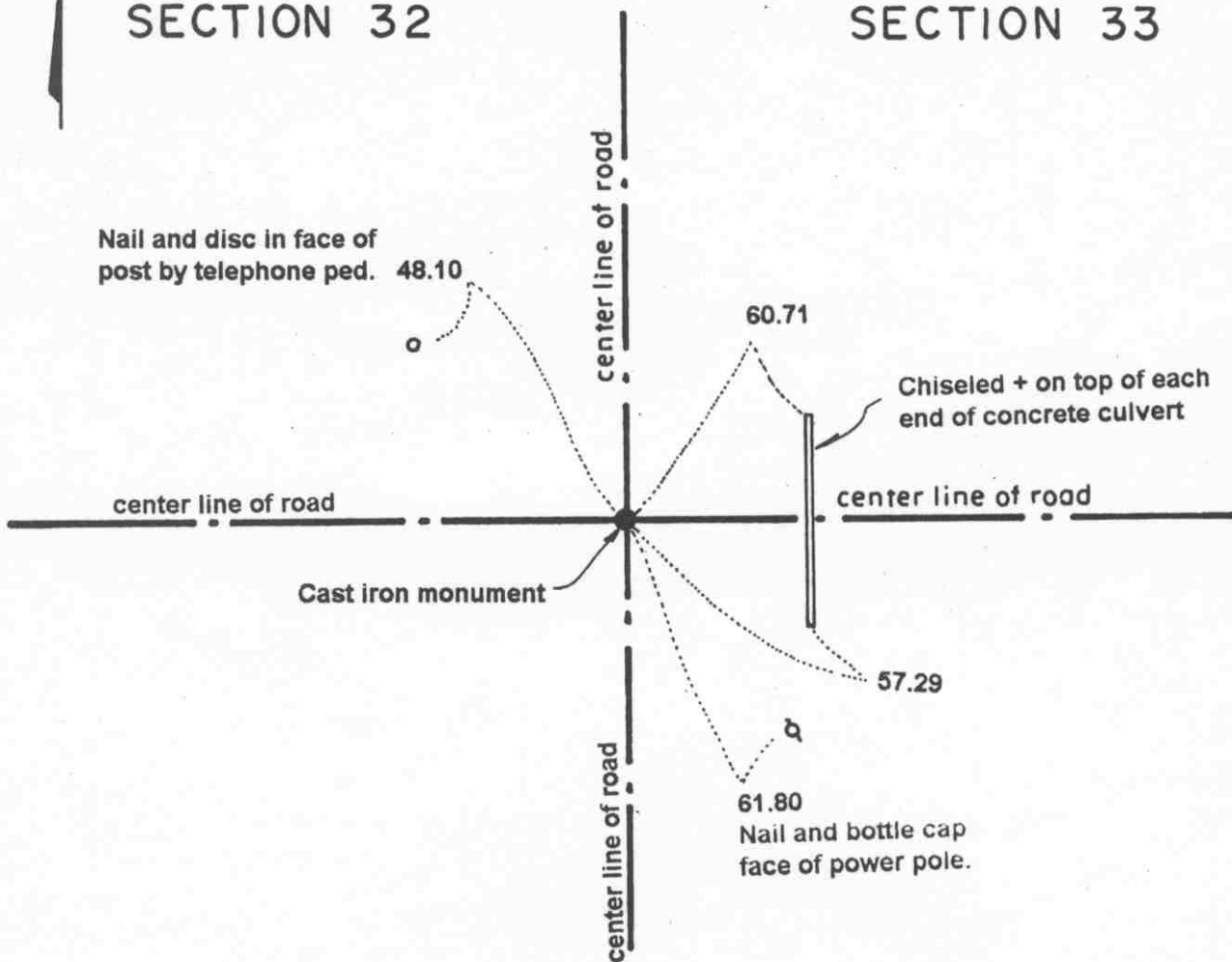
SOUTHEAST corner, Section 32, Township 115 North, Range 27 West

SKETCH OF REFERENCE TIES (NO SCALE)

T. 115 N., R. 27 W.

SECTION 32

SECTION 33



SECTION 5

SECTION 4

T. 114 N., R. 27 W.

Statement of evidence relative to this corner location on sheet 2

I hereby certify that this document was prepared by me or under my direct supervision.

Willard Pellinen

Willard Pellinen
McLeod County Surveyor
License No. 9626.

Date June 9, 1995

OFFICE OF THE COUNTY RECORDER
MCLEOD COUNTY, MINNESOTA

I hereby certify that this document was filed in this office at 2 o'clock P. M. on the 13th day of June 19 95.

GARREN OSTLIE WILDFEL, MCLEOD COUNTY RECORDER

County Recorder

By Dhyllis Sophocinak, Deputy.

Document No. 266258

***Certificate of Location of Government Corner
Southeast Corner, Section 32, Township 115 North, Range 27 West***

1855. John Ryan of the General Land Office originally established this corner. He set a post and marked 2 ironwoods, a linden and an elm for bearing trees.

1974. This corner was reestablished by the Sibley County Surveyor and was accepted by Dickman Knutson, McLeod County Surveyor.

March 30, 1995. We took new available reference ties to the corner.

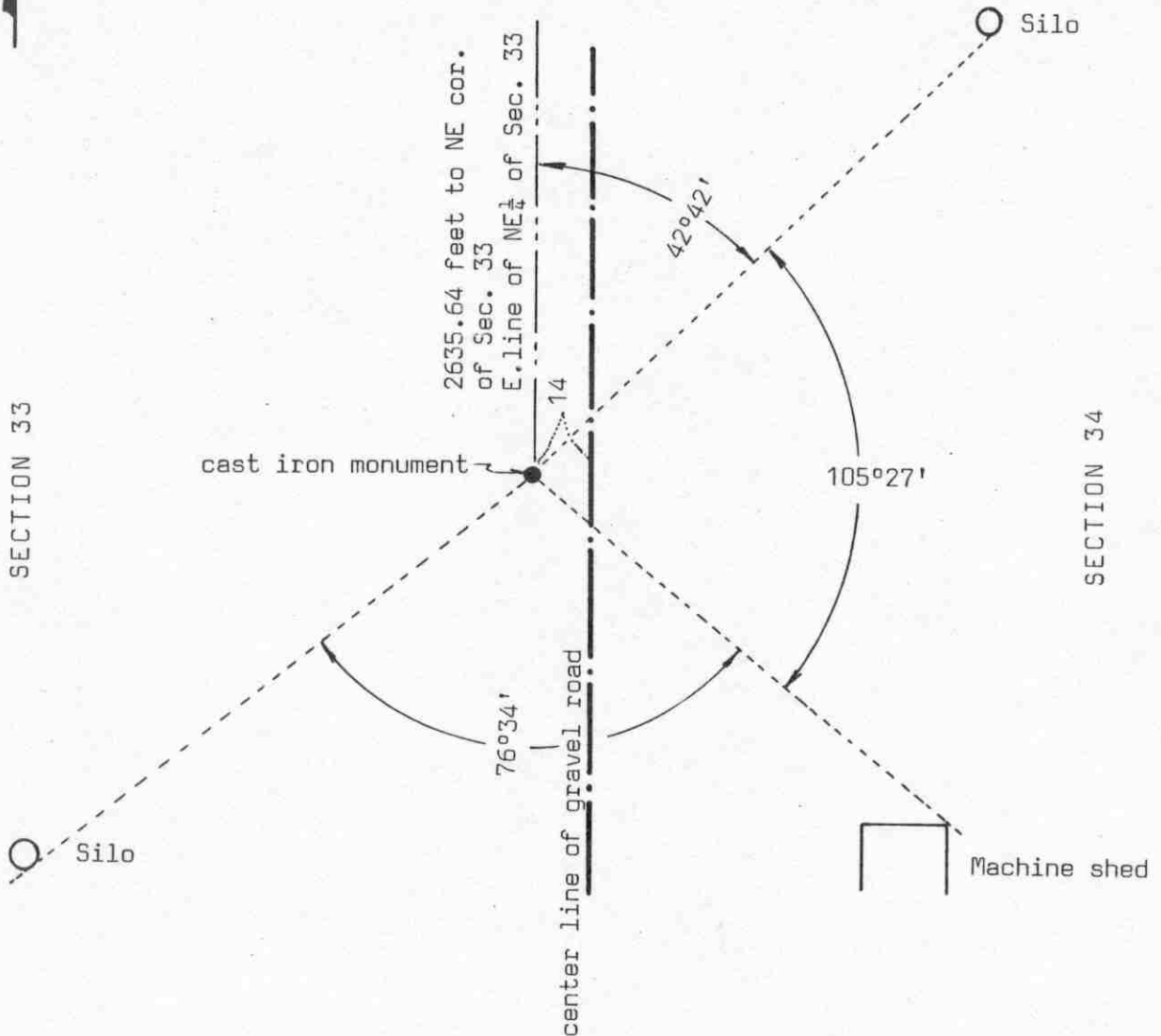
Certificate of Location of Government Corner

SKETCH OF REFERENCE TIES (NO SCALE)



SECTION 33

SECTION 34



Statement of evidence relative to this corner location on sheet 2

I hereby certify that this document was prepared by me or under my direct supervision.

Willard Pellinen
Willard Pellinen
McLeod County Surveyor
License No. 9626

Date July 14, 1990

OFFICE OF THE COUNTY RECORDER
MCLEOD COUNTY, MINNESOTA.

I hereby certify that this document was filed in this office at 2 o'clock P. M. on the 23rd day of July, 1990.

Carmen Obelie, County Recorder

By _____, Deputy

Document No. 234550

EAST QUARTER corner, Section 33, Township 115 North, Range 27 West

Certificate of Location of Government Corner

This corner was originally set by the government in October, 1856. E.N. Darling set a post and had reference ties to 2 trees.

February 6, 1973. McCombs Knutson Associates (Dickman Knutson, county surveyor) measured the east line of Section 33 and set a temporary east quarter corner on the center line of the north south road in line with a field line to the east.

May 14, 1974. Knutson dug for the corner, John Tupa from Hutchinson with a backhoe. They dug a hole 6 feet by 6 feet by 4 feet deep but found nothing. Mr. Geogre Michaelis, 70 years old, who had lived in the Southwest Quarter of Section 34 all his life said the corner is on the west side of the road. He owned the land on both sides of the quarter corner when the road was built by Bullert and he gave permission to build it all east of the quarter corner. The land was higher there. He said there used to be an iron, an axle, at the corner but it was graded out. Knutson found an axle in the field just east of the corner, laying down. Mr. Michaelis pointed out the location where the axle used to be. Mr. Lloyd Sanken, 69 years old, in the Northwest Quarter of Section 34 since 1956, agreed with Mr. Michaelis.

May 28, 1974. Knutson set a cast iron monument at the location pointed out by Mr. Michaelis and took reference ties.

June 2, 1989. We found the monument in good condition and we measured the east line of Section 33. The corner falls 11.1 feet south of a split between the section corners and 5.81 feet east of a straight line between the section corners.

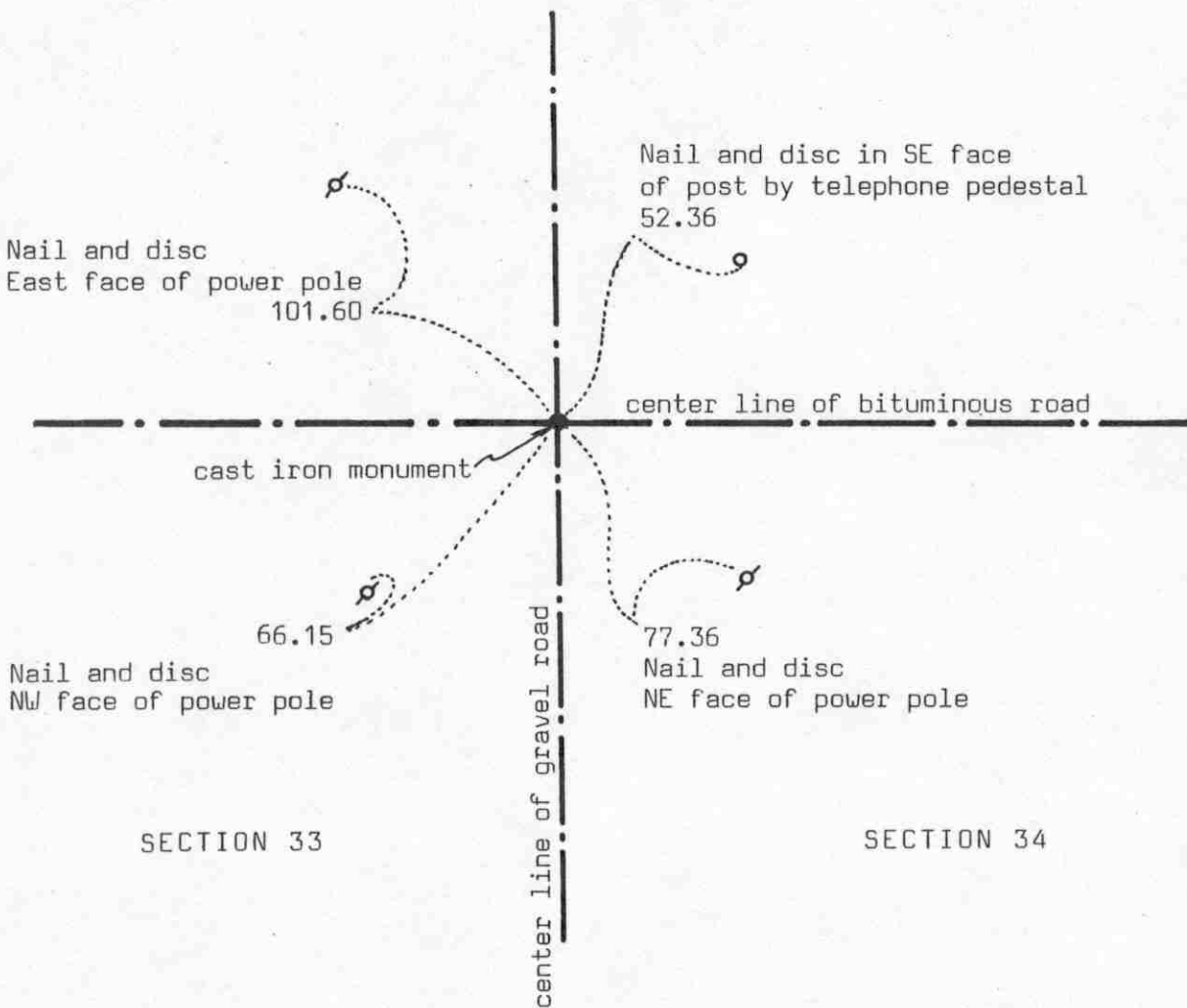
Certificate of Location of Government Corner

SKETCH OF REFERENCE TIES (NO SCALE)



SECTION 28

SECTION 27



SECTION 33

SECTION 34

Statement of evidence relative to this corner location on sheet 2

I hereby certify that this document was prepared by me or under my direct supervision.

Willard Pellinen
 Willard Pellinen
 McLeod County Surveyor
 License No. 9626
 Date July 13, 1990

OFFICE OF THE COUNTY RECORDER MCLEOD COUNTY, MINNESOTA.

I hereby certify that this document was filed in this office at 9 o'clock A. M. on the 19th day of July, 1990.

Carmen Holli, County Recorder
 By _____, Deputy
 Document No. 234483

Certificate of Location of Government Corner

October, 1856. E.N.Darling of the General Land Office established this corner. He set a post and had ties to 4 bearing trees.

September 26, 1935. E.L.Higgins, county surveyor, found nothing at the corner. He set a stone at the center line intersection of the roads.

May 13, 1974. McCombs Knutson Associates (Dickman Knutson, county surveyor) dug for the corner, John Tupa from Hutchinson with a backhoe. Down $3\frac{1}{2}$ feet below the bituminous surface they found a stone, 6 inches in diameter and 16 inches long, set on end. They took reference ties.

May 23, 1974. Knutson set a spike at the corner using the May 13 ties and took additional ties.

November 12, 1975. Knutson set a McLeod County cast iron monument at the corner.

June 2, 1989. We found a P.K. nail on the surface of the bituminous road, over the cast iron monument. The reference ties were ok.

The center line intersection of the roads, later the stone set by Higgins in 1935 and the monument set by Knutson in 1975 have perpetuated the correct location of the section corner.

BRANDENBURG RECORD

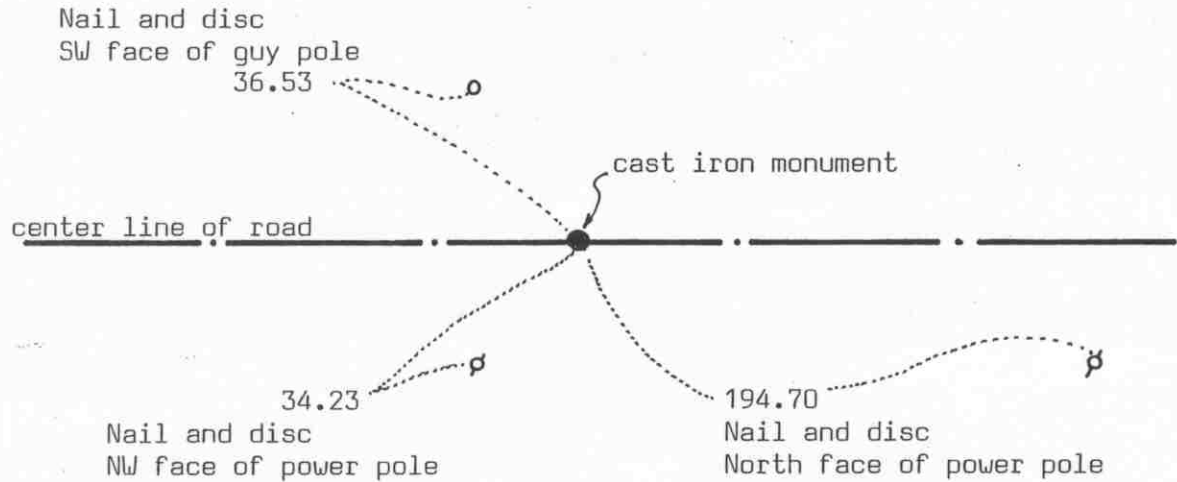
NORTH QUARTER corner, Section 33, Township 115 North, Range 27 West

Certificate of Location of Government Corner

SKETCH OF REFERENCE TIES

(NO SCALE)

SECTION 28



SECTION 33

Statement of evidence relative to this corner location on sheet 2

I hereby certify that this document was prepared by me or under my direct supervision.

Willard Pellinen

Willard Pellinen
McLeod County Surveyor
License No. 9626

Date Dec. 21, 1993

OFFICE OF THE COUNTY RECORDER
MCLEOD COUNTY, MINNESOTA.

I hereby certify that this document was filed in this office at 9 o'clock A.M. on the 23rd day of December, 1993.

Carmen Estlie Mulder, County Recorder

By _____, Deputy

Document No. 256689

NORTH QUARTER corner, Section 33, Township 115 North, Range 27 West

Certificate of Location of Government Corner

1856. E. N. Darling of the General Land Office set a post and marked 2 aspens for bearing trees.

1935. E. L. Higgins, county surveyor, set an angle iron $\frac{1}{2}$ way between the section corners.

February 5, 1974. Dickman Knutson, county surveyor, chained the north line of Section 33 and set a temporary quarter corner on the center line of the east-west road $\frac{1}{2}$ way between the section corners.

May 13, 1974. Knutson dug for the corner, John Tupa from Hutchinson with a backhoe. They found no evidence of the corner.

May 23, 1974. Knutson set a spike half way between the section corners and took reference ties.

November 12, 1975. Knutson set a McLeod County cast iron monument.

October 15, 1993. We found the monument in good condition and checked the reference ties. This monument is within $\frac{1}{2}$ foot of being on a split between the section corners and within 2 feet of being on a straight line between the section corners.

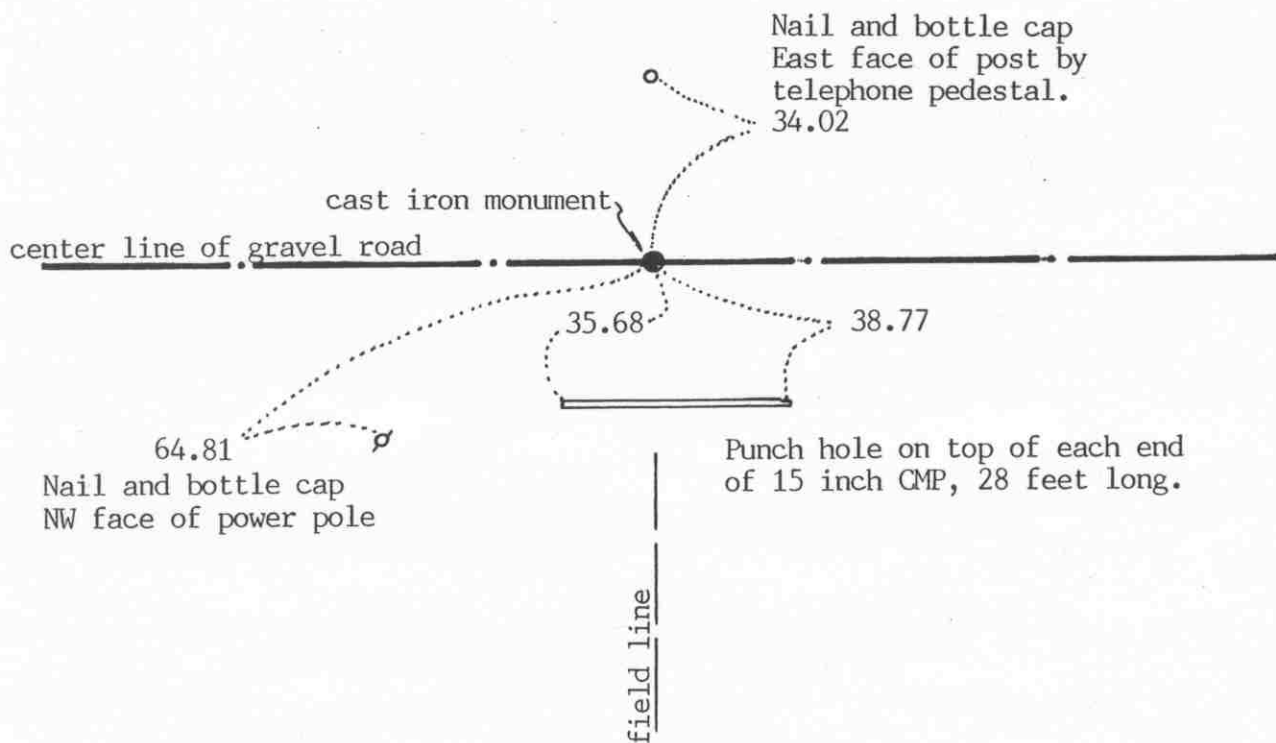
The monument set by Knutson is accepted as marking the correct location of the quarter corner. It is very close to the location set by Higgins in 1935.

SOUTH QUARTER corner, Section 33, Township 115 North, Range 27 West

Certificate of Location of Government Corner

SKETCH OF REFERENCE TIES
(NO SCALE)

SECTION 33, T. 115, R. 27



SECTION 4, T. 114, R. 27

Statement of evidence relative to this corner location on sheet 2

I hereby certify that this document was prepared by me or under my direct supervision.

Willard Pellinen

Willard Pellinen
McLeod County Surveyor
License No. 9626

Date Oct. 18, 1993.

OFFICE OF THE COUNTY RECORDER
MCLEOD COUNTY, MINNESOTA.

I hereby certify that this document was filed in this office at 9 o'clock A. M. on the 23rd day of December, 1993.

Carmen Estlie Mulder County Recorder

By _____, Deputy

Document No. 256690

Certificate of Location of Government Corner

July, 1855. John Ryan of the General Land Office established this corner. He set a post and marked 2 oaks for bearing trees.

1973. Delbert Rieke, Sibley County Surveyor, dug a hole 5 feet deep by 8 feet wide and 10 feet long but found nothing.

Rieke set a cast iron monument and took reference ties.

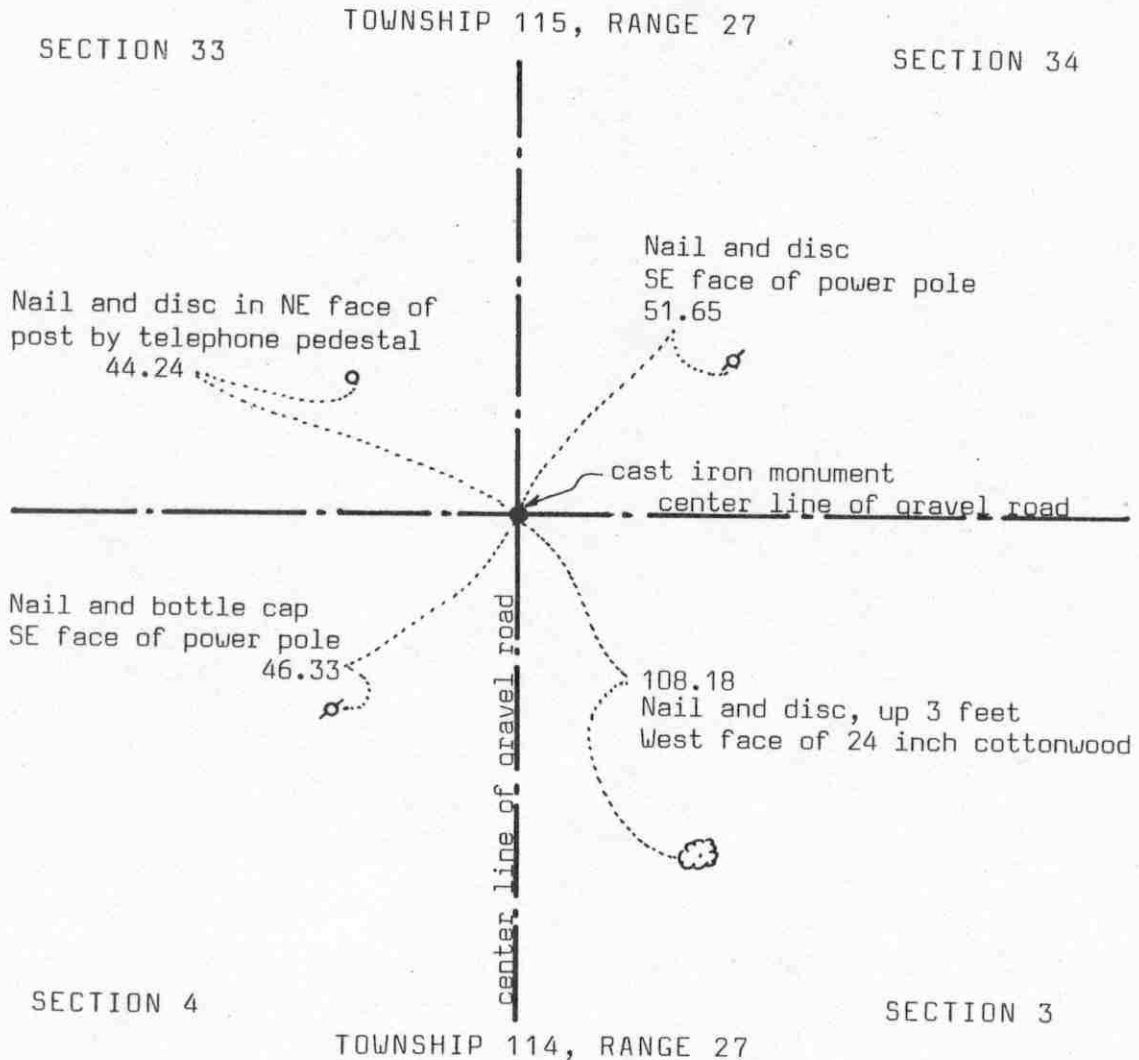
October 15, 1993. We found the monument in good condition down 8 inches below the gravel surface and took new reference ties.

SOUTHEAST corner, Section 33, Township 115 North, Range 27 West

Certificate of Location of Government Corner



SKETCH OF REFERENCE TIES (NO SCALE)



Statement of evidence relative to this corner location on sheet 2

I hereby certify that this document was prepared by me or under my direct supervision.

Willard Pellinen
Willard Pellinen
McLeod County Surveyor
License No. 9626

Date July 14, 1990

OFFICE OF THE COUNTY RECORDER
MCLEOD COUNTY, MINNESOTA.

I hereby certify that this document was filed in this office at 2 o'clock P. M. on the 23rd day of July, 1990.

Sarman Ostlie, County Recorder

By _____, Deputy

Document No. 234551

SOUTHEAST corner, Section 33, Township 115 North, Range 27 West

Certificate of Location of Government Corner

July, 1855. John Ryan of the General Land Office set a post at the corner and had reference ties to 4 trees.

1973. Delbert Rieke, Sibley County Surveyor, dug for the corner and found a stone at the center line intersection of gravel roads. Arthur Dammann who had previously owned the Northeast Quarter of Section 4 said he had found the corner stone at one time and thought this was the same stone. Rieke set a cast iron monument over the stone and took reference ties.

June 2, 1989. We found the cast iron monument in good condition and took new reference ties.

MINNESOTA DEPARTMENT OF REVENUE
SOUTH DAKOTA DEPARTMENT OF REVENUE
75 SOUTH MAIN STREET, SIOUX FALLS, SD 57105

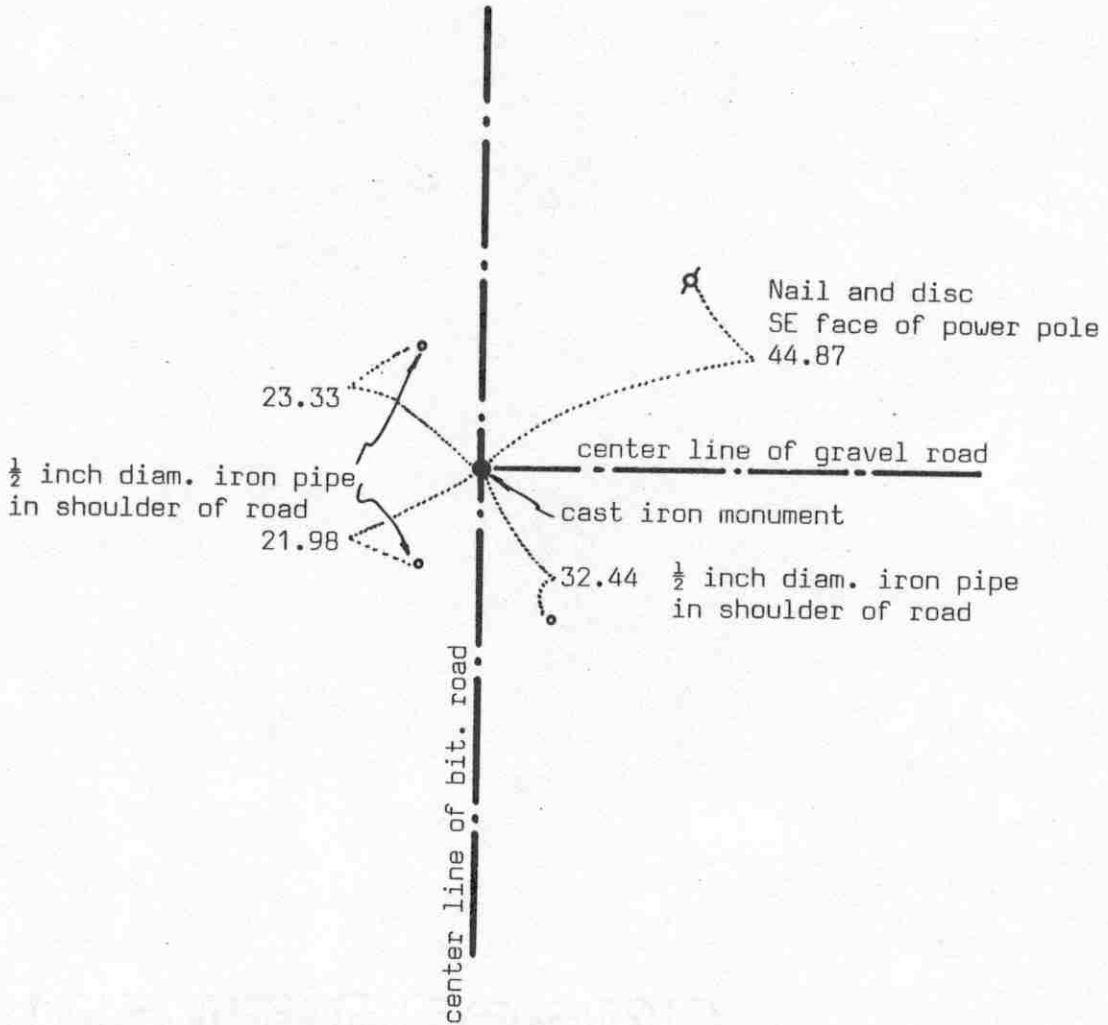
Certificate of Location of Government Corner

SKETCH OF REFERENCE TIES
(NO SCALE)



SECTION 34

SECTION 35



Statement of evidence relative to this corner location on sheet 2

I hereby certify that this document was prepared by me or under my direct supervision.

Willard Pellinen
Willard Pellinen
McLeod County Surveyor
License No. 9626

Date July 14, 1990

OFFICE OF THE COUNTY RECORDER
MCLEOD COUNTY, MINNESOTA.

I hereby certify that this document was filed in this office at 2 o'clock P.M. on the 23rd day of July, 1990.

Carmen Ostlie, County Recorder

By _____, Deputy

Document No. 234553

EAST QUARTER corner, Section 34, Township 115 North, Range 27 West

Certificate of Location of Government Corner

This corner was established by the government in October, 1856. E.N. Darling set a post and had 2 bearing trees.

1974. Mr. Ernest Droege, 89 years old, has lived in the Southwest Quarter of Section 35 all his life, says the road running east from the corner was built on the east-west quarter line of Section 35. Mr. Arthur Spangler, 71 years old, in the Northwest Quarter of Section 35 since 1946, agrees with Mr. Droege.

February 6, 1974. McCombs Knutson Associates (Dickman Knutson, county surveyor) measured the east line of Section 34 and set a temporary east quarter corner on the center line intersection of the roads.

May 14, 1974. Knutson dug for the corner, John Tupa from Hutchinson with a backhoe. They found a 5 inch diameter stone, 14 inches long (set on end) down $2\frac{1}{2}$ feet below the gravel road surface. They took reference ties.

May 28, 1974. Knutson set a McLeod County cast iron monument at the corner and took additional ties.

June 2, 1989. We found the cast iron monument in good condition down 8 inches below the bituminous surface but all the reference ties had been destroyed. We took new reference ties and measured the east line of Section 34. The corner falls 7.1 feet south of a split between the section corners and 1.2 feet west of a straight line.

We accept the stone found by Knutson as having perpetuated the correct location of the quarter corner.

NORTHEAST corner, Section 34, Township 115 North, Range 27 West

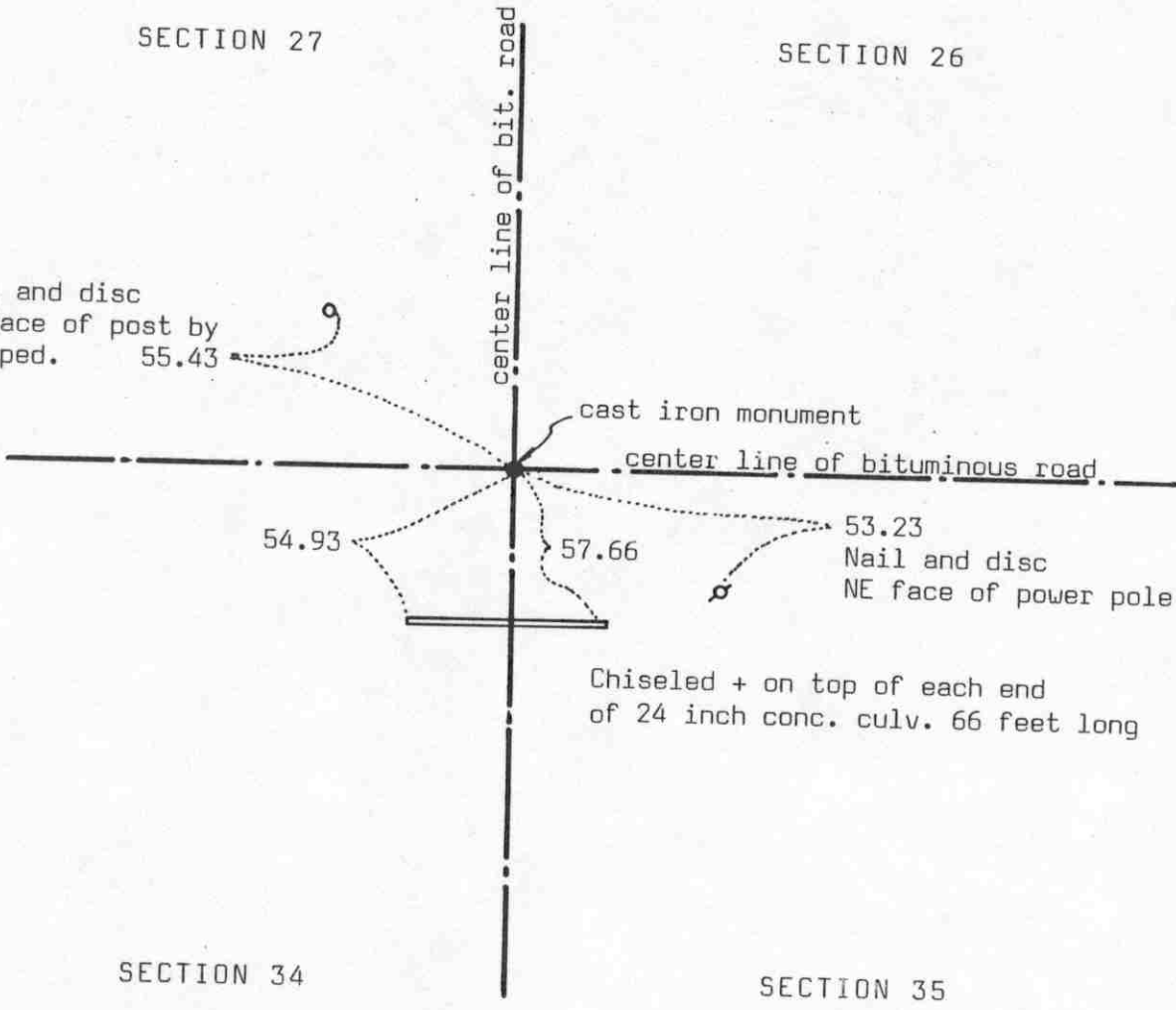
Certificate of Location of Government Corner

SKETCH OF REFERENCE TIES (NO SCALE)



SECTION 27

SECTION 26



SECTION 34

SECTION 35

Statement of evidence relative to this corner location on sheet 2

I hereby certify that this document was prepared by me or under my direct supervision.

Willard Pellinen
Willard Pellinen
McLeod County Surveyor
License No. 9626

Date July 14, 1990

OFFICE OF THE COUNTY RECORDER MCLEOD COUNTY, MINNESOTA.

I hereby certify that this document was filed in this office at 2 o'clock P.M. on the 23rd day of July, 1990.

Carmen Ostlie, County Recorder

By _____, Deputy

Document No. 234552

NORTHEAST corner, Section 34, Township 115 North, Range 27 West

Certificate of Location of Government Corner

This corner was originally set by the government in 1856. E.N.Darling set a post, had ties to 2 bearing trees and dug a trench.

May 13, 1974. McCombs Knutson Associates (Dickman Knutson, county surveyor) dug for the corner, John Tupa from Hutchinson with a backhoe. They found nothing.

May 23, 1974. Knutson set a spike at the center line intersection of the roads which has been accepted as the section corner by adjoining land owners. They took reference ties.

October 4, 1976. Knutson set a McLeod County cast iron monument at the corner.

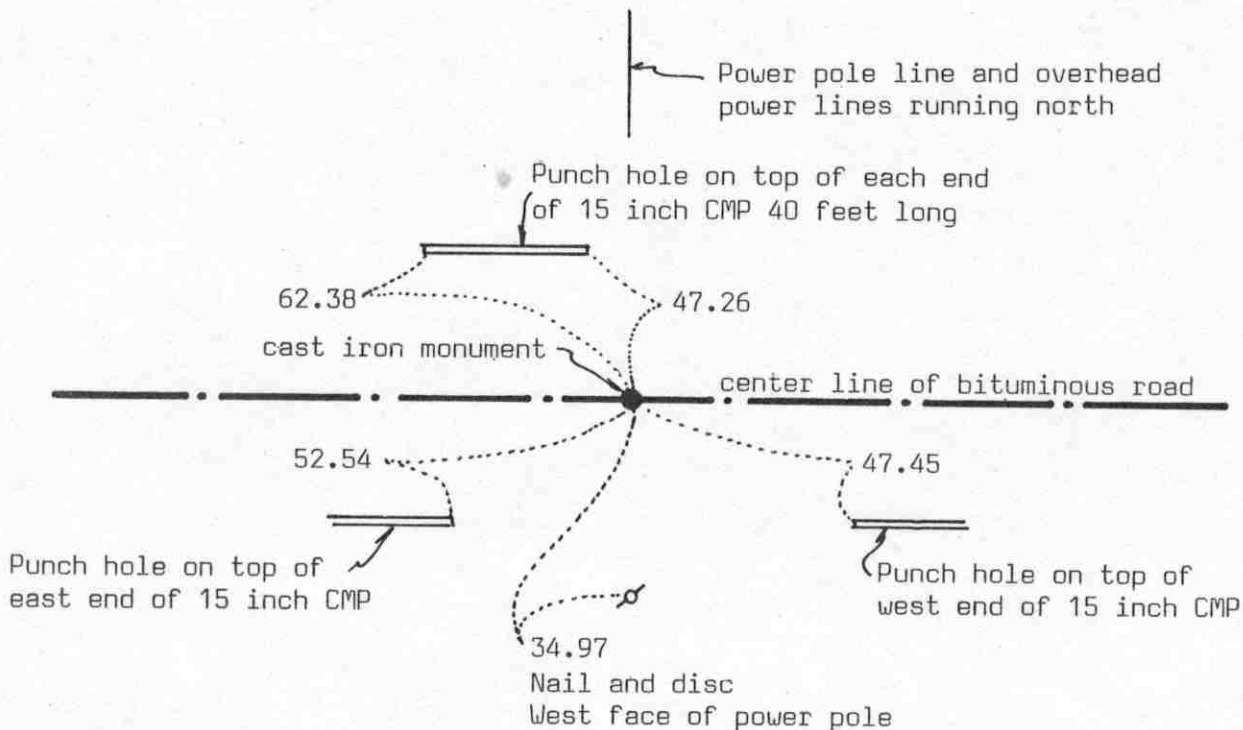
June 2, 1989. We found no reference ties remaining. We found the cast iron monument in good condition down 6 inches below the bituminous surface. We took new reference ties.

Certificate of Location of Government Corner



SKETCH OF REFERENCE TIES (NO SCALE)

SECTION 27



SECTION 34

Statement of evidence relative to this corner location on sheet 2

I hereby certify that this document was prepared by me or under my direct supervision.

Willard Pellinen
Willard Pellinen
McLeod County Surveyor
License No. 9626

Date July 13, 1990

OFFICE OF THE COUNTY RECORDER
MCLEOD COUNTY, MINNESOTA.

I hereby certify that this document was filed in this office at 2 o'clock P.M. on the 23rd day of July, 1990.

Carmen Bellie, County Recorder
By _____, Deputy

Document No. 234555

NORTH-QUARTER corner, Section 34, Township 115 North, Range 27 West

Certificate of Location of Government Corner

This corner was originally established by the government in October, 1856. E.N.Darling set a post and had ties to 2 trees.

January, 1974. Ben Ruschmeier, 67 years old, who has lived in the Northeast Quarter of Section 34 all his life, said the center line of the road in line with the power pole line running north is the corner. The power pole line is in the same location as an old fence used to be. Lester Dammann, 60 years old, in the Southeast Quarter of Section 27 all his life and Lloyd Sanken, 69 years old, in the Northwest Quarter of Section 34 since 1956 agree with Mr. Ruschmeier.

May 13, 1974. McCombs Knutson Associates (Dickman Knutson, county surveyor) dug for the corner, John Tupa from Hutchinson with a backhoe. They found nothing.

October 4, 1976. Knutson set a cast iron monument on the center line of the road in line with the power pole line running north.

June 2, 1989. We found the cast iron monument in good condition down 6 inches below the road surface, but all the reference ties were destroyed. We took new reference ties and measured the north line of Section 34. The corner is within a tenth of a foot of being half way between the section corners and 7.4 feet south of a straight line.

We feel the power pole line (the old fence line) and the center line of the road have perpetuated the correct location of the quarter corner.

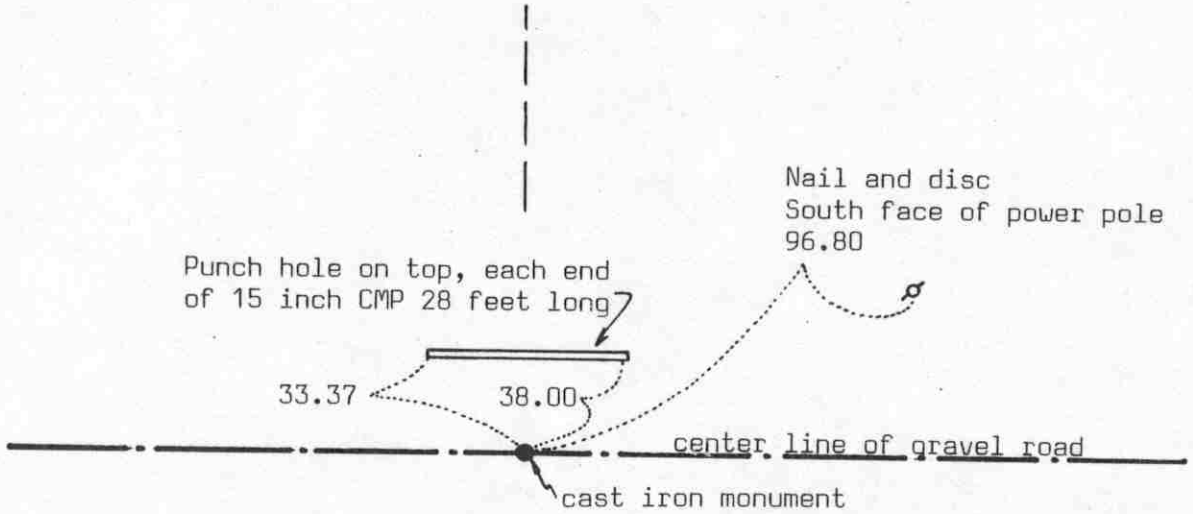
SOUTH QUARTER corner, Section 34, Township 115 North, Range 27 West

Certificate of Location of Government Corner



SKETCH OF REFERENCE TIES (NO SCALE)

SECTION 34, TOWNSHIP 115, RANGE 27



SECTION 3, TOWNSHIP 114, RANGE 27

Statement of evidence relative to this corner location on sheet 2

I hereby certify that this document was prepared by me or under my direct supervision.

Willard Pellinen
 Willard Pellinen
 McLeod County Surveyor
 License No. 9626

Date July 14, 1990

OFFICE OF THE COUNTY RECORDER
 MCLEOD COUNTY, MINNESOTA.

I hereby certify that this document was filed in this office at 2 o'clock P.M. on the 23rd day of July, 1990.

Carmen Ostlie, County Recorder
 By _____, Deputy

Document No. 234556

SOUTH QUARTER corner, Section 34, Township 115 North, Range 27 West

Certificate of Location of Government Corner

This corner was originally established by the government in July, 1855. John Ryan set a post and had ties to 2 bur oaks.

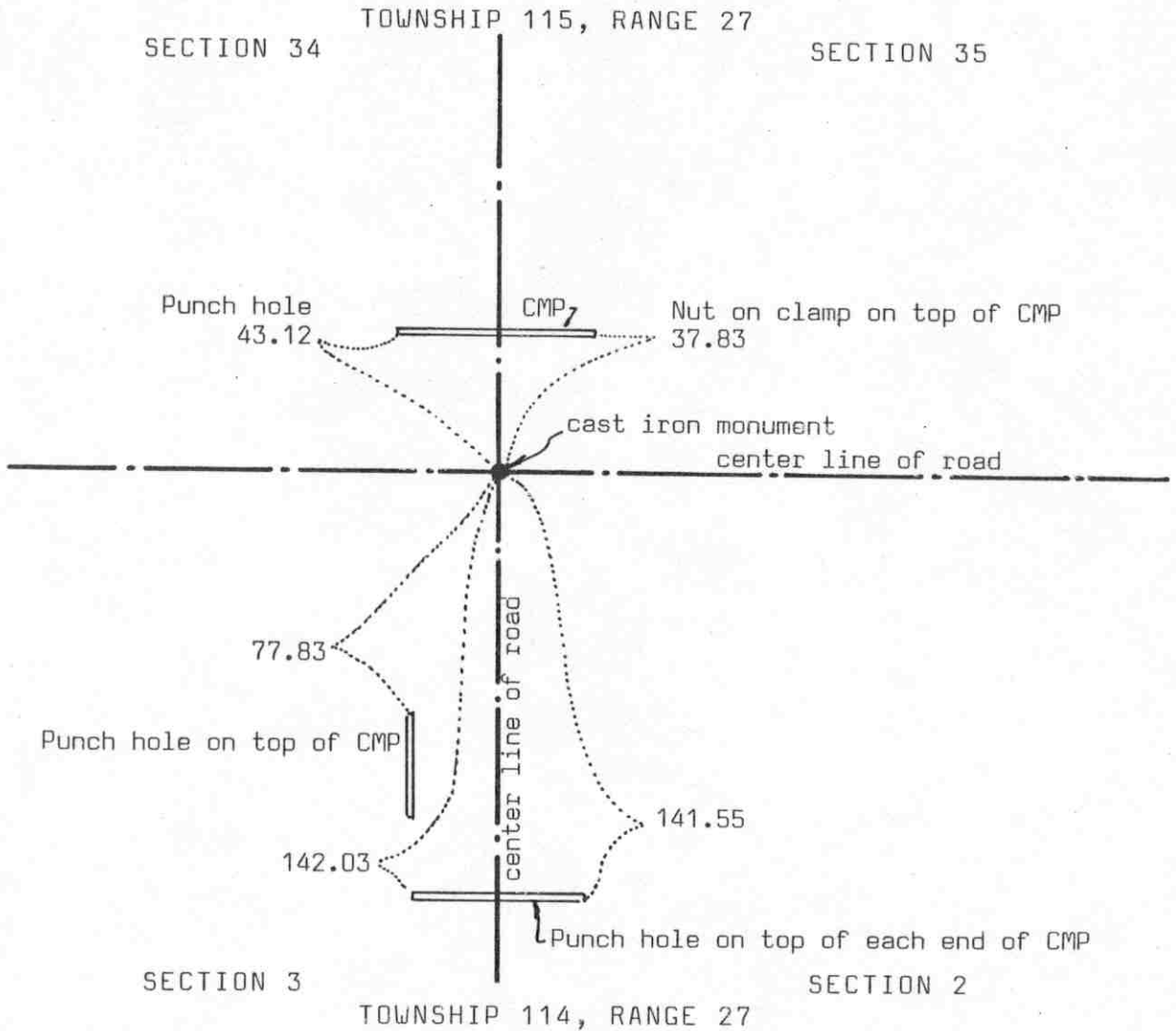
In 1974, Delbert Rieke, county surveyor of Sibley County, set a cast iron monument in the center line of the gravel road running east-west and in line with a field division running north.

June 2, 1989. We found the cast iron monument in good condition down 4 inches below the road surface. We took reference ties and measured the south line of Section 34. We found the corner to be 0.7 foot west of a split between the section corners and approximately 4.3 feet south of a straight line between the section corners.

Certificate of Location of Government Corner



SKETCH OF REFERENCE TIES
(NO SCALE)



Statement of evidence relative to this corner location on sheet 2

I hereby certify that this document was prepared by me or under my direct supervision.

Willard Pellinen
Willard Pellinen
McLeod County Surveyor
License No. 9626

Date July 14, 1990

OFFICE OF THE COUNTY RECORDER
MCLEOD COUNTY, MINNESOTA.

I hereby certify that this document was filed in this office at 2 o'clock P.M. on the 23rd day of July, 1990.

Carmen Ostie County Recorder

By _____, Deputy

Document No. 234554

Certificate of Location of Government Corner

This corner was originally set by the government in July, 1855. John Ryan "set post in mound as per instructions with deposit of charcoal."

1974. Delbert Rieke, Sibley County Surveyor, set a cast iron monument at the center line intersection of roads. Adjoining landowners testified the center line intersection has been accepted as the correct corner.

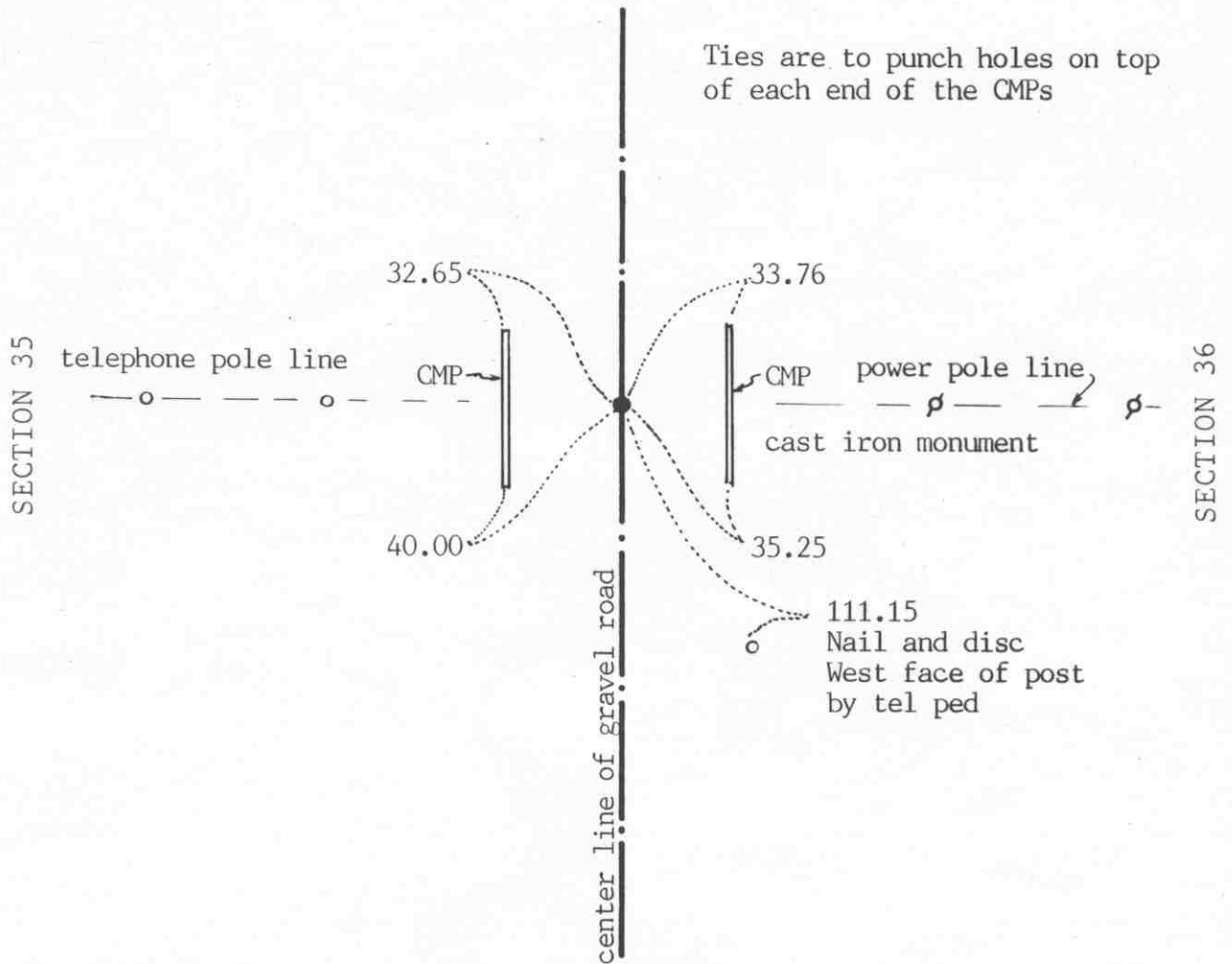
November 12, 1975. McCombs Knutson Associates (Dickman Knutson, McLeod County Surveyor) found the cast iron monument and took reference ties.

June 2, 1989. We found the cast iron monument in good condition and the reference ties good.

EAST QUARTER corner, Section 35, Township 115 North, Range 27 West

Certificate of Location of Government Corner

SKETCH OF REFERENCE TIES
(NO SCALE)



Statement of evidence relative to this corner location on sheet 2

I hereby certify that this document was prepared by me or under my direct supervision.

Willard Pellinen
Willard Pellinen
McLeod County Surveyor
License No. 9626

Date Jan. 10, 1991

OFFICE OF THE COUNTY RECORDER
MCLEOD COUNTY, MINNESOTA.

I hereby certify that this document was filed in this office at 3 o'clock P..M. on the 15th day of Jan, 1991.

Carmen Ostlie, County Recorder
By _____, Deputy

Document No. 237099

EAST QUARTER corner, Section 35, Township 115 North, Range 27 West

Certificate of Location of Government Corner

This corner was originally set by the government in 1856. E.N. Darling set a post and marked 1 aspen and 1 bur oak for bearing trees.

January 8, 1974. Mr. Ernest Droege, 89 years old, lives in the Southeast Quarter of Section 35, said the telephone pole line running west was put along the east-west quarter line of Section 35. It was put along the old fence line. Mr. Loren Dammann, 42 years old, in the Southwest Quarter of Section 36 all his life, agrees with Mr. Droege and he said the power pole line running east is 6 to 12 inches south of the east-west quarter line of Section 36. Mr. Henry Engelke, 68 years old, has lived in the Northwest Quarter of Section 36 since 1930, also said the power pole line running east is 6 to 12 inches south of the quarter line.

May 14, 1974. McCombs Knutson Associates (Dickman Knutson, county surveyor) dug for the corner, John Tupa from Hutchinson with a backhoe. They dug a hole 6 feet by 8 feet by 3½ feet deep but found nothing.

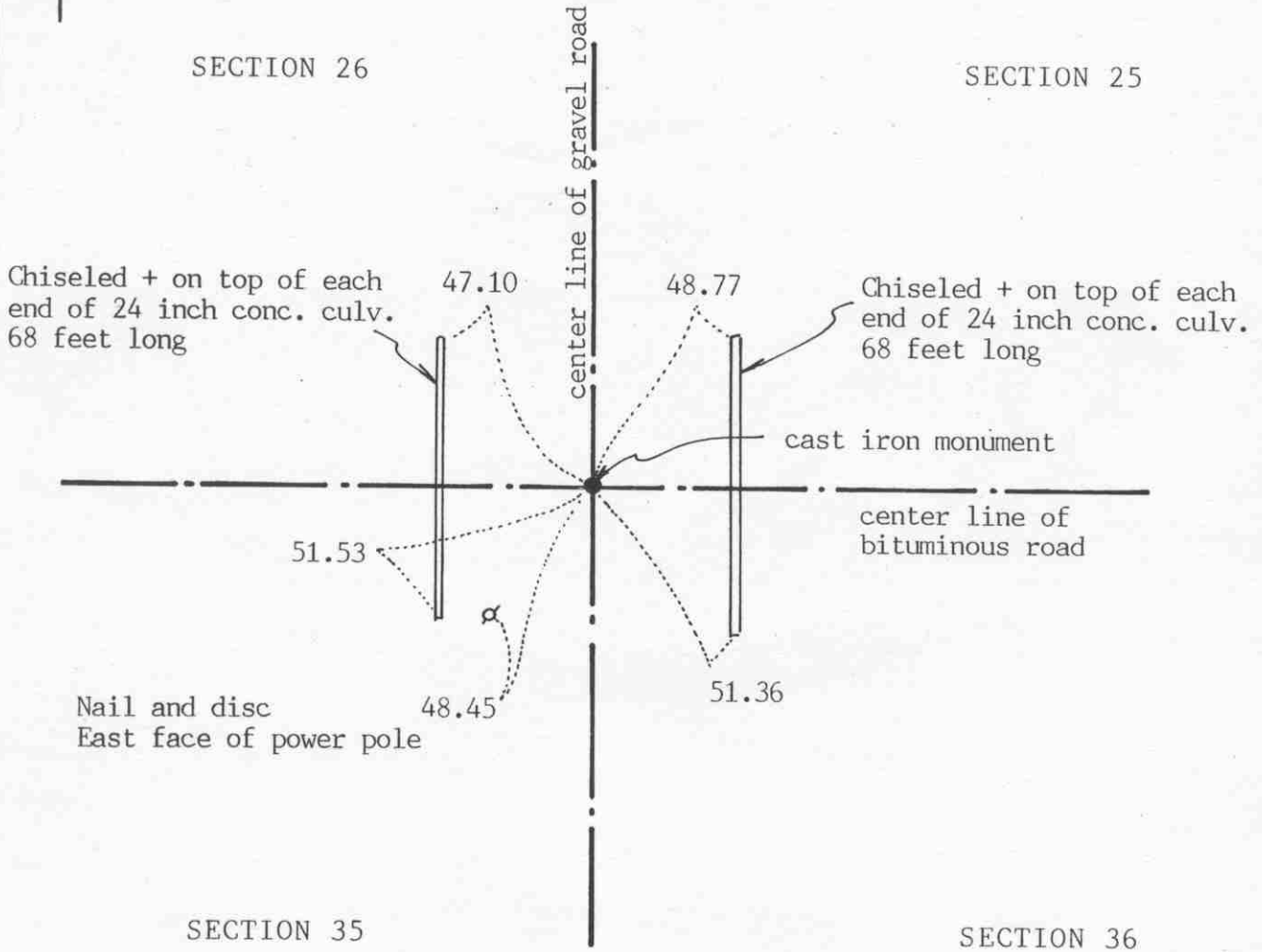
July 29, 1974. Knutson set a McLeod County cast iron monument on the center line of the road in line with the telephone pole line running west. This is about a foot north of the power pole line running east.

November 20, 1989. We found the monument in good condition and the reference ties good. The corner falls about 9 feet south of a split between the section corners and about 4½ feet west of a straight line between the section corners.

NORTHEAST corner, Section 35, Township 115 North, Range 27 West

Certificate of Location of Government Corner

SKETCH OF REFERENCE TIES
(NO SCALE)



Statement of evidence relative to this corner location on sheet 2

I hereby certify that this document was prepared by me or under my direct supervision.

Willard Pellinen
Willard Pellinen
McLeod County Surveyor
License No. 9626

Date Jan. 10, 1991

OFFICE OF THE COUNTY RECORDER
MCLEOD COUNTY, MINNESOTA.

I hereby certify that this document was filed in this office at 3 o'clock P.M. on the 15th day of Jan, 1991.

Carmen Ostlie, County Recorder

By _____, Deputy

Document No. 237098

Certificate of Location of Government Corner

1856. The government established this corner. E.N. Darling set a post, built a mound of earth, drove a charred stake, dug a trench and planted apple seeds.

May 13, 1974. McCombs Knutson Associates (Dickman Knutson, county surveyor) dug for the corner. John Tupa from Hutchinson with a backhoe. They found a 6 inch diameter stone down 3 feet below the surface, a wood stake beside the stone. This stone agreed with 1941 distances by the County Highway Department to the north quarter corners of Sections 35 and 36.

September 11, 1978. Knutson set a McLeod County cast iron monument, flush with the surface of the road, over the found stone and took reference ties.

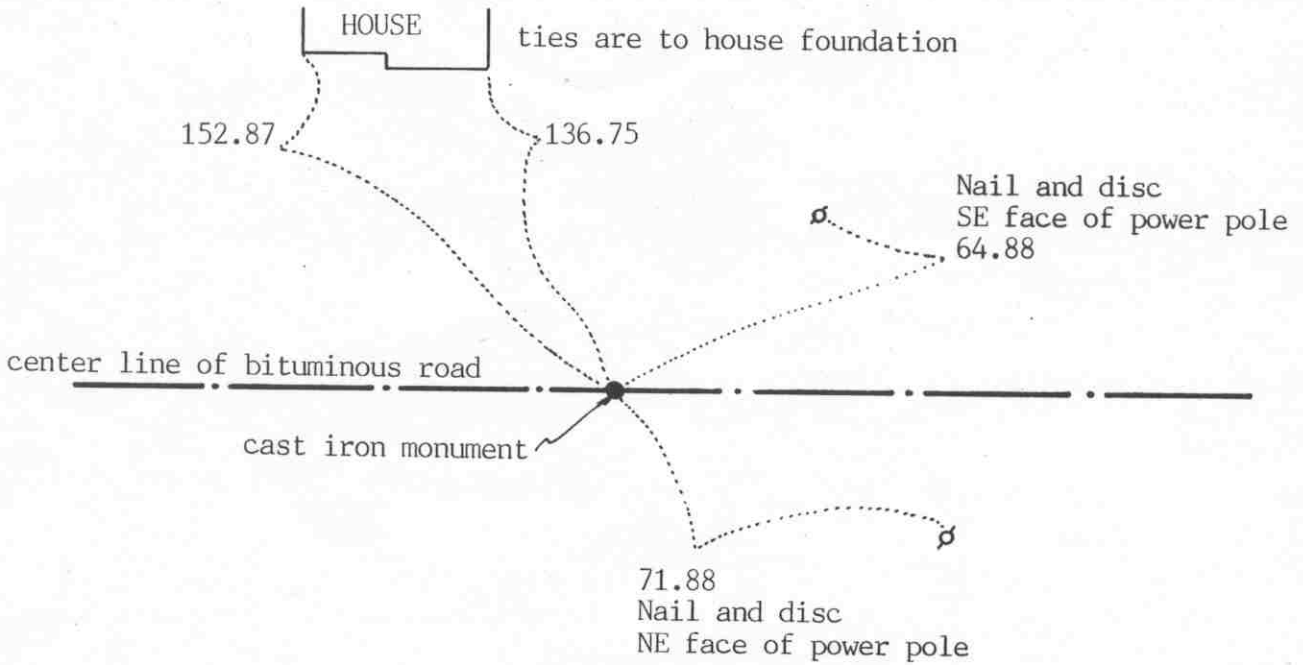
November 20, 1989. We found the monument in good condition down 5 inches below the road surface. We took new reference ties.

NORTH QUARTER corner, Section 35, Township 115 North, Range 27 West

Certificate of Location of Government Corner

SKETCH OF REFERENCE TIES (NO SCALE)

SECTION 26



SECTION 35

Statement of evidence relative to this corner location on sheet 2

I hereby certify that this document was prepared by me or under my direct supervision.

Willard Pellinen
Willard Pellinen
McLeod County Surveyor
License No. 9626

Date Jan. 10, 1991

OFFICE OF THE COUNTY RECORDER
MCLEOD COUNTY, MINNESOTA.

I hereby certify that this document was filed in this office at 3 o'clock P. M. on the 15th day of Jan, 1991.

Carmen Ostlie, County Recorder

By _____, Deputy

Document No. 237101

NORTH QUARTER corner, Section 35, Township 115 North, Range 27 West

Certificate of Location of Government Corner

The Government notes show this corner was set in 1856 by E.N.Darling. He set a post, drove a charred stake, built mound of earth, dug trench and planted apple seeds at the corners of the mound.

February 6, 1974. McCombs Knutson Associates (Dickman Knutson, county surveyor) measured the north line of the section and set a temporary corner on the center line of the east-west road in line with a field line to the south. Arthur Spangler, 71 years old, has lived in the Northwest Quarter of Section 35 since 1946, said the field line is where the old fence used to be. He set a wood post where the fence was.

May 13, 1974. Knutson dug for the corner, John Tupa from Hutchinson with a backhoe. They found nothing.

September 11, 1978. Knutson set a cast iron monument and took reference ties.

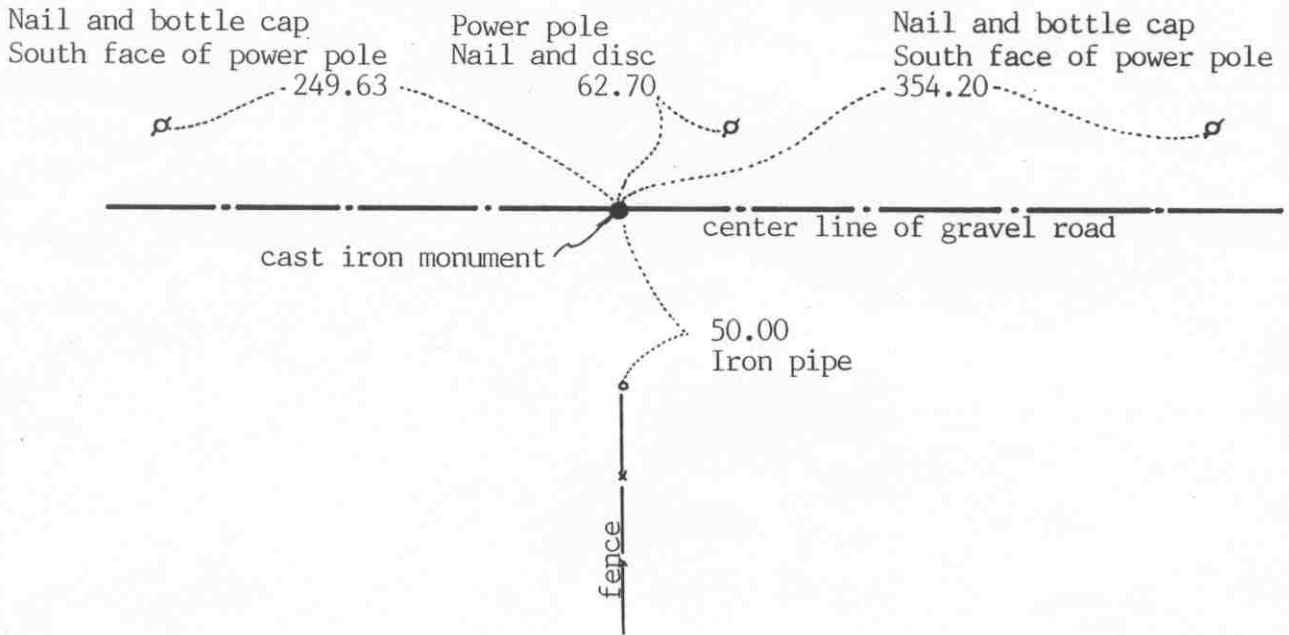
November 20, 1989. We checked the reference ties and set a PK nail on the surface of the bituminous over the cast iron monument.

SOUTH QUARTER corner, Section 35, Township 115 North, Range 27 West

Certificate of Location of Government Corner

SKETCH OF REFERENCE TIES (NO SCALE)

SECTION 35, T115, R27



SECTION 2, T114, R27

Statement of evidence relative to this corner location on sheet 2

I hereby certify that this document was prepared by me or under my direct supervision.

Willard Pellinen

Willard Pellinen
McLeod County Surveyor
License No. 9626

Date Jan. 10, 1991

OFFICE OF THE COUNTY RECORDER
MCLEOD COUNTY, MINNESOTA.

I hereby certify that this document was filed in this office at 3 o'clock P. M. on the 15th day of Jan, 1991.

Carmen Holie, County Recorder

By _____, Deputy

Document No. 237102

SOUTH QUARTER corner, Section 35, Township 115 North, Range 27 West

Certificate of Location of Government Corner

This corner was originally established by the General Land Office in July, 1855. John Ryan set a post in a mound, with deposit of charcoal.

1974. Rieke-Carroll-Muller Associates (Delbert Rieke, Sibley County Surveyor) talked with the adjoining land owners. None of them knew anything about a corner stone, but they all agreed the center line of the road and the fence running south were the section line and the quarter line. Rieke set a cast iron monument on the center line of the road in line with the fence running south.

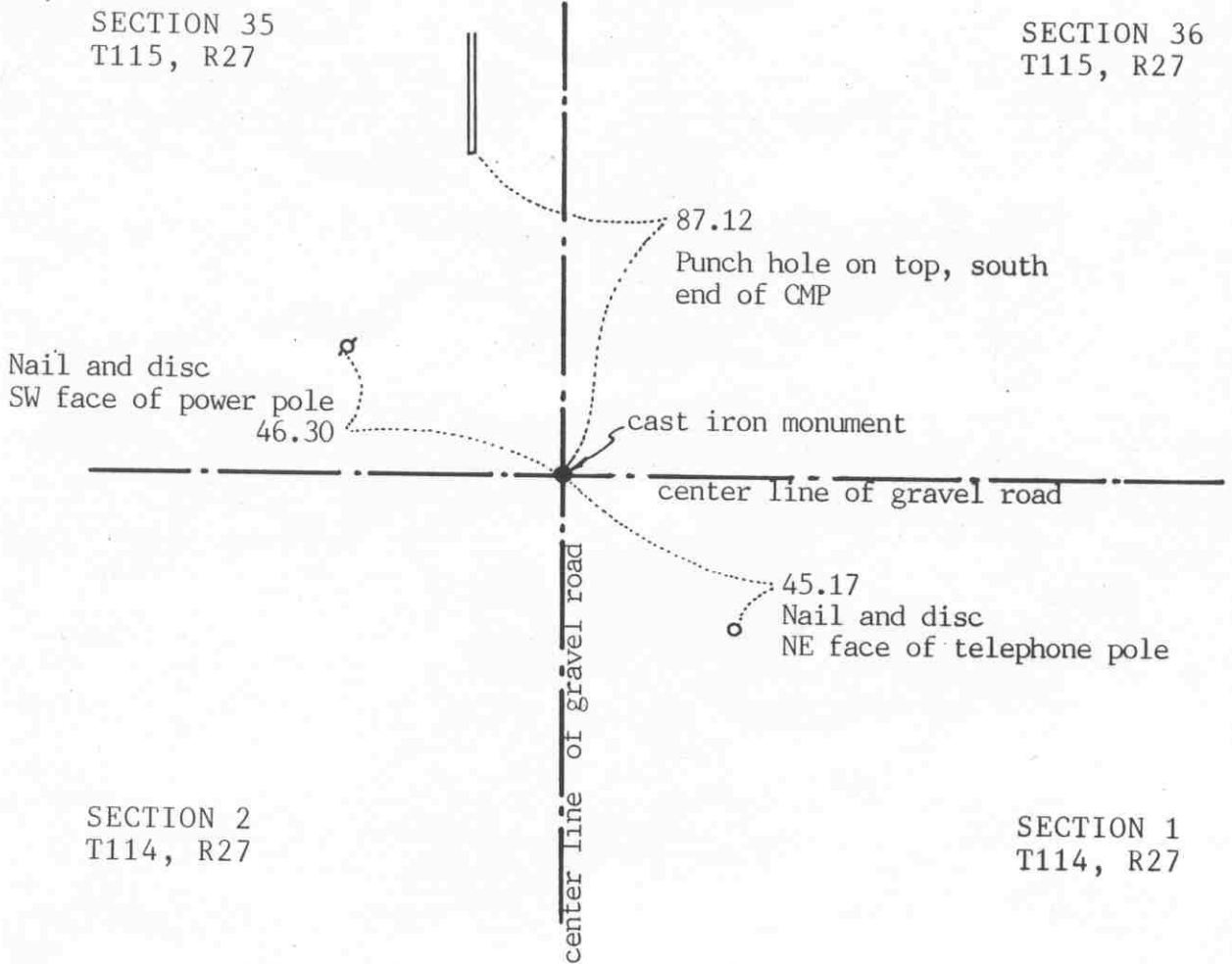
November 12, 1975. We found the monument in good condition and took reference ties.

November 20, 1989. We found the monument ok and checked the reference ties. This corner falls with $1\frac{1}{2}$ feet of being on a split between the section corners and about 4 feet north of a straight line between the section corners.

SOUTHEAST corner, Section 35, Township 115 North, Range 27 West

Certificate of Location of Government Corner

SKETCH OF REFERENCE TIES (NO SCALE)



Statement of evidence relative to this corner location on sheet 2

I hereby certify that this document was prepared by me or under my direct supervision.

Willard Pellinen

Willard Pellinen
McLeod County Surveyor
License No. 9626

Date Jan. 9, 1991

OFFICE OF THE COUNTY RECORDER MCLEOD COUNTY, MINNESOTA.

I hereby certify that this document was filed in this office at 3 o'clock P. M. on the 15th day of Jan, 1991.

Carmen Helie, County Recorder

By _____, Deputy

Document No. 237100

SOUTHEAST corner, Section 35, Township 115 North, Range 27 West

Certificate of Location of Government Corner

This corner was originally set by the government in July, 1855. John Ryan "set post in mound as per instructions, with deposit of charcoal."

1932. E.L.Higgins measured 2659.7 feet to the south quarter corner of Section 36. His field notes show a stone at the southeast corner of Section 35.

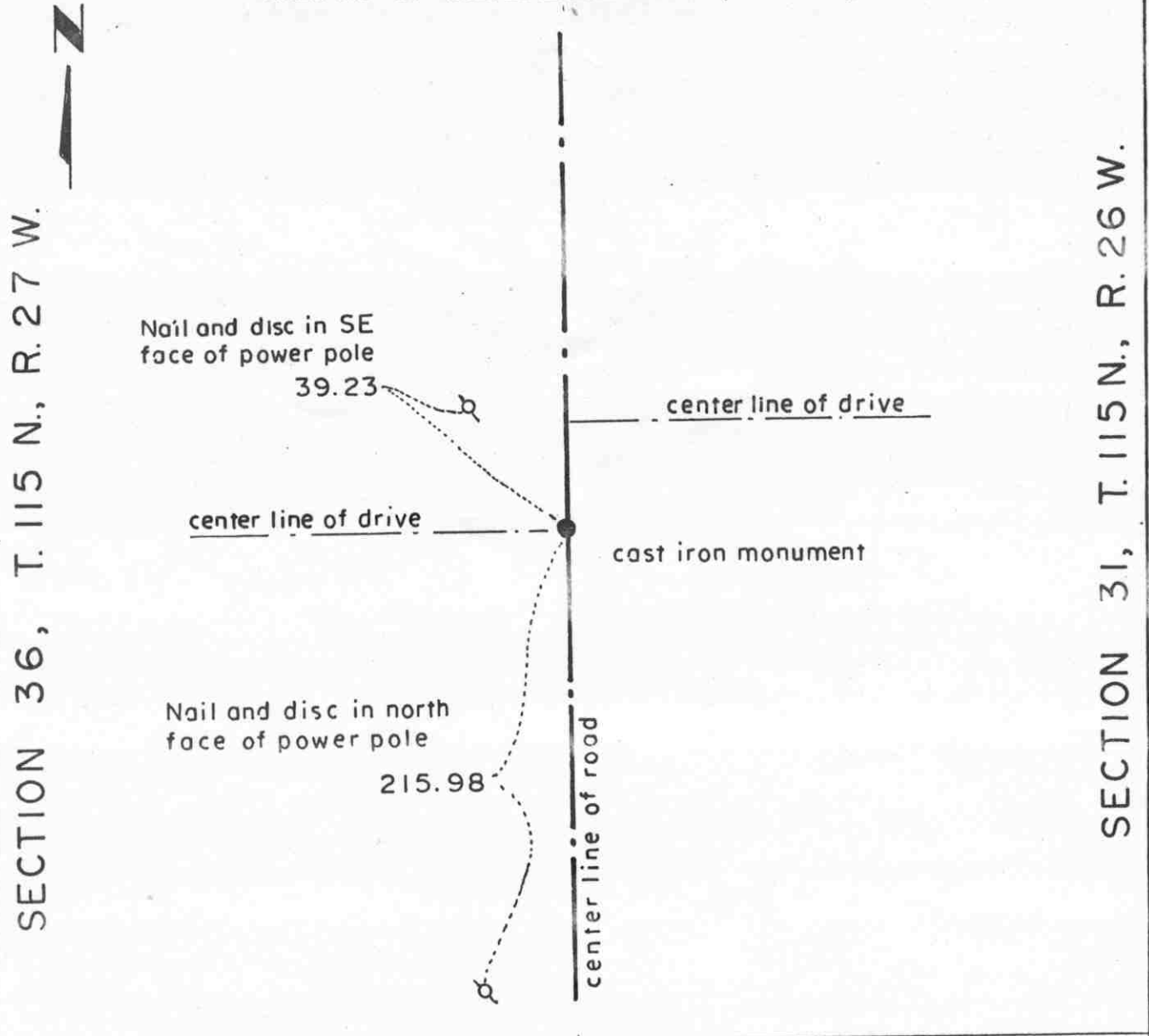
1973. Rieke-Carroll-Muller Associates (D. Rieke, Sibley County Surveyor) dug for the corner and found a stone down $1\frac{1}{2}$ feet below the old road bed. Fred Sprengler, in the Northeast Quarter of Section 2 and Loren Dammann in the Southwest Quarter of Section 36 both agreed the stone is the correct corner. They measured 2659.43 feet to the south quarter corner of Section 36. They set a cast iron monument at the corner.

November 20, 1989. We found the monument in good condition and took new reference ties.

Certificate of Location of Government Corner

EAST QUARTER corner, Section 36, Township 115 North, Range 27 West

SKETCH OF REFERENCE TIES (NO SCALE)



Statement of evidence relative to this corner location on sheet 2

I hereby certify that this document was prepared by me or under my direct supervision.

Willard Pellinen
 Willard Pellinen
 McLeod County Surveyor
 License No. 9626.

Date Oct. 15, 1994

OFFICE OF THE COUNTY RECORDER
 MCLEOD COUNTY, MINNESOTA

I hereby certify that this document was filed in this office at 9 o'clock A. M. on the 13th day of January, 19 95.

Carmen Estlie Mulder County Recorder

By _____, Deputy.

Document No. 263712

Certificate of Location of Government Corner
East Quarter Corner, Section 36, Township 115 North, Range 27 West

1855. John Ryan of the General Land Office established this corner. He set a post and marked a 12 inch oak and a 4 inch aspen for bearing trees.

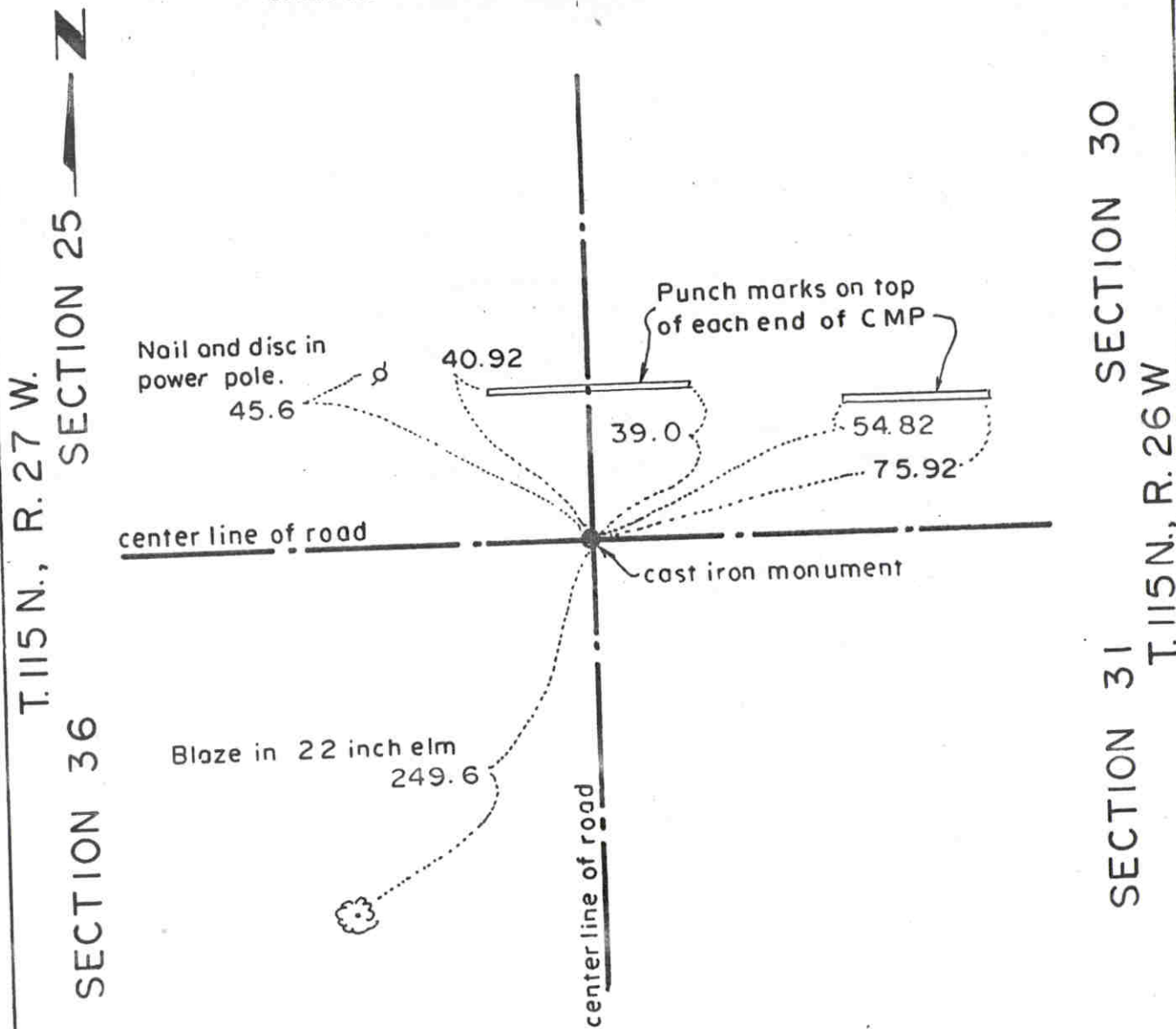
The Carver County Surveyor set a cast iron monument at the corner. This was accepted by Dickman Knutson, McLeod County Surveyor as marking the correct location of the corner.

June 16, 1978. Knutson took available reference ties to the corner.

Certificate of Location of Government Corner

NORTHEAST corner, Section 36, Township 115 North, Range 27 West

SKETCH OF REFERENCE TIES (NO SCALE)



Statement of evidence relative to this corner location on sheet 2

I hereby certify that this document was prepared by me or under my direct supervision.

Willard Pellinen
Willard Pellinen
McLeod County Surveyor
License No. 9626.

Date Oct. 30, 1995

OFFICE OF THE COUNTY RECORDER
MCLEOD COUNTY, MINNESOTA

I hereby certify that this document was filed in this office at 9 o'clock A. M. on the 13th day of January 19 95.

Carmin Ottilie Mulder, County Recorder

By _____, Deputy.

Document No. 263711

Certificate of Location of Government Corner
Northeast Corner, Section 36, Township 115 North, Range 27 West

1855. John Ryan of the General Land Office established this corner. He set a post and marked an elm, an oak, an aspen and a linden for bearing trees.

July, 1971. The Carver County Surveyor found a limestone and set a Carver County cast iron monument at the corner. This location was accepted by Dickman Knutson, McLeod County Surveyor.

NORTH QUARTER corner, Section 36, Township 115 North, Range 27 West

Certificate of Location of Government Corner

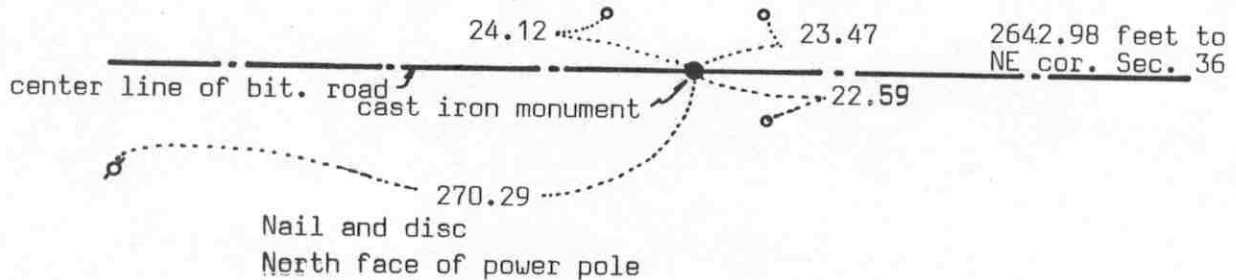
SKETCH OF REFERENCE TIES (NO SCALE)



SECTION 25



$\frac{1}{2}$ inch diam. iron pipes in shoulder of road



SECTION 36

Statement of evidence relative to this corner location on sheet 2

I hereby certify that this document was prepared by me or under my direct supervision.

Willard Pellinen
Willard Pellinen
McLeod County Surveyor
License No. 9626

Date July 11, 1990

OFFICE OF THE COUNTY RECORDER
MCLEOD COUNTY, MINNESOTA.

I hereby certify that this document was filed in this office at 9 o'clock A.M. on the 19th day of July, 1990.

Carmen Ostlie, County Recorder

By _____, Deputy

Document No. 234484

Certificate of Location of Government Corner

The Government notes show this corner was originally set in 1856. E.N. Darling set a post in a marsh and had ties to 2 bearing trees.

January 8, 1974. Mr. Leonard Delfke, 63 years old and who has lived in the Southeast Quarter of Section 25 all his life, and Mr. Paul Burdorf, 65 years old, in the Southwest Quarter of Section 25 for 40 years, say the corner is the center line of the County Highway in line with the field line running north.

February 5, 1974. McCombs Knutson Associates (Dickman Knutson, county surveyor) measured the north line of Section 36 and set a temporary quarter corner in the center line in line with the field line.

May 13, 1974. Knutson dug for the corner, John Tupa from Hutchinson with a backhoe. They dug a hole 6 feet by 8 feet by 6 feet deep but found nothing.

September 11, 1978. Knutson set a cast iron monument in the center line in line with the field line and took reference ties. This falls on a proration of county highway distances to the northwest and northeast corners of Section 36.

May 18, 1989. We found the cast iron monument in good condition down 6 inches below the road surface surface and took new reference ties.

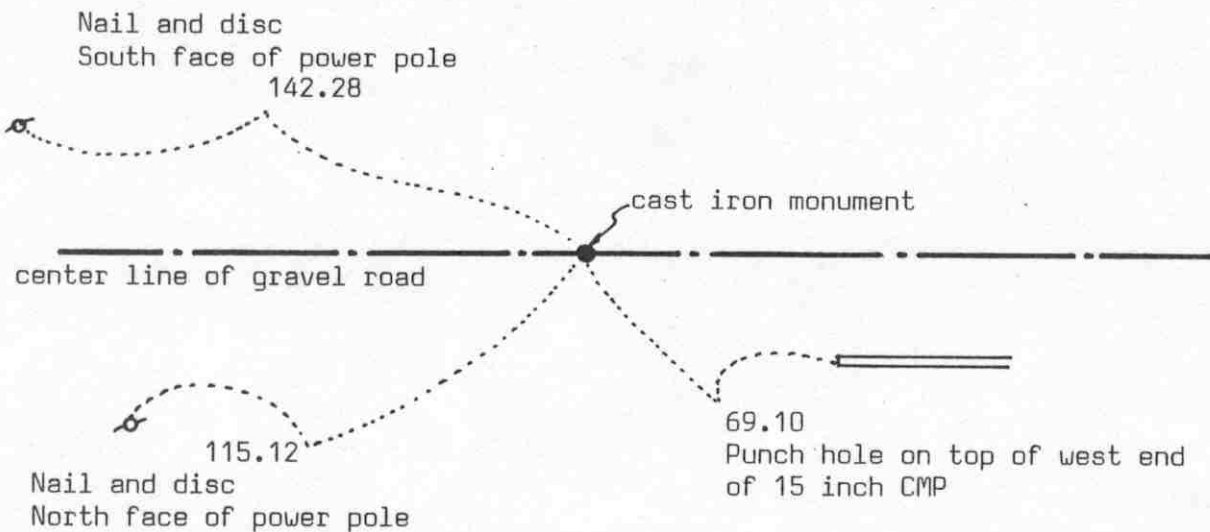
SOUTH QUARTER corner, Section 36, Township 115 North, Range 27 West

Certificate of Location of Government Corner



SKETCH OF REFERENCE TIES (NO SCALE)

SECTION 36, T. 115, R. 27



SECTION 1, T. 114, R. 27

Statement of evidence relative to this corner location on sheet 2

I hereby certify that this document was prepared by me or under my direct supervision.

Willard Pellinen

Willard Pellinen
McLeod County Surveyor
License No. 9626

Date July 11, 1990

OFFICE OF THE COUNTY RECORDER MCLEOD COUNTY, MINNESOTA.

I hereby certify that this document was filed in this office at 9 o'clock A. M. on the 19th day of July, 1990.

Carmen Ostlie, County Recorder

By _____, Deputy

Document No. 234485

SOUTH QUARTER corner, Section 36, Township 115 North, Range 27 West

Certificate of Location of Government Corner

The government notes show this corner was originally established in 1855. John Ryan set a post and took reference ties to 2 bearing trees.

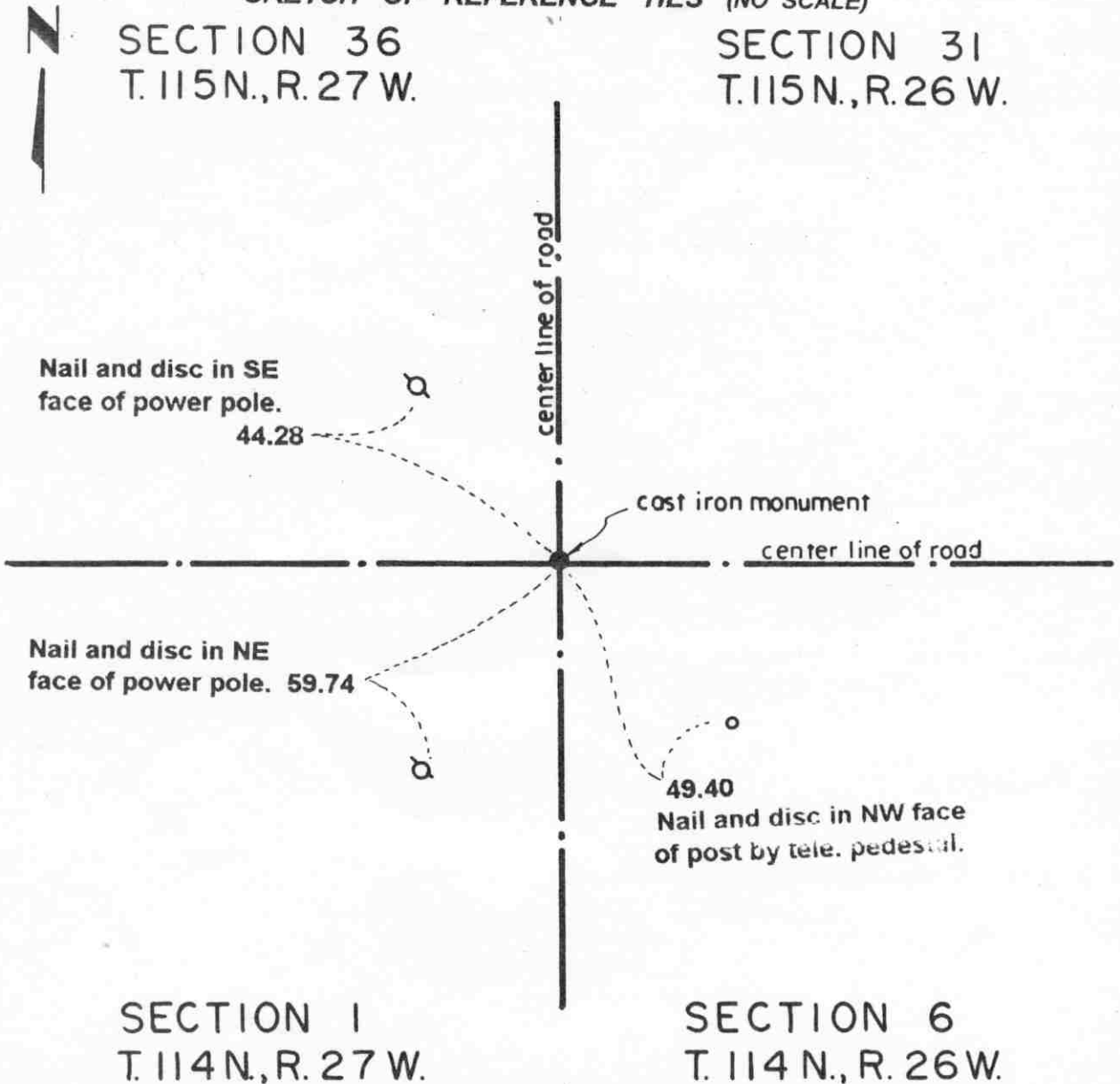
1974. Delbert Riecke, Sibley County Surveyor, reset the corner using lost methods as had E.L.Higgins in 1932.

May 18, 1989. We found no reference ties remaining but found the monument in good condition 12 inches below the gravel road surface. We took new reference ties.

Certificate of Location of Government Corner

SOUTHEAST corner, Section 36, Township 115 North, Range 27 West

SKETCH OF REFERENCE TIES (NO SCALE)



SECTION 1
T. 114 N., R. 27 W.

SECTION 6
T. 114 N., R. 26 W.

Statement of evidence relative to this corner location on sheet 2

I hereby certify that this document was prepared by me or under my direct supervision.

Willard Pellinen
Willard Pellinen
McLeod County Surveyor
License No. 9626.

Date Oct. 9, 1995

OFFICE OF THE COUNTY RECORDER
MCLEOD COUNTY, MINNESOTA

I hereby certify that this document was filed in this office at 9 o'clock A. M. on the 13th day of October 19 95.

Charman Dotlie-Mulder, County Recorder

By _____, Deputy.

Document No. 268585

***Certificate of Location of Government Corner
Southeast Corner, Section 36, Township 115 North, Range 27 West***

1855. John Ryan of the General Land Office originally established this corner.

1971. Dickman Knutson, McLeod County Surveyor, accepted the location as reestablished by the Carver County Surveyor.

1994. We found the monument set by the Carver County Surveyor and took new reference ties.